



Healthy lifestyle

# Gamm's

## PROTEIN

PRODUCT CATALOGUE WINTER 2025



Healthy lifestyle

*gamma's*

**PROTEIN**



OUR MISSION IS TO WIDELY PROVIDE  
TASTY, PROTEIN-ENHANCED SNACKS AND  
FOOD SUPPLEMENTS THAT SUPPORT STAMINA  
AND PROMOTE AN ACTIVE, HEALTH-CONSCIOUS LIFESTYLE,  
USING HIGH-QUALITY INGREDIENTS.

OUR AMBITION IS TO BECOME ONE OF THE LEADING  
BRANDS IN PROTEIN-ENHANCED SNACKING.

# CONTENTS

WHO WE ARE 01-09

## PROTEIN BARS

CORE PROTEIN BARS 10-13  
CORE PROTEIN SPLASH BARS 14-15  
MULTILAYER PROTEIN BARS 16-17  
POWER PROTEIN BARS 18-19  
COLLAGEN BARS 20-21  
EXTRA-SOFT BARS 22-24  
VEGAN PROTEIN BARS 25-26  
NUTS PROTEIN BARS 27-28  
CEREAL PROTEIN BARS 29-30

## DUBAI LINE

PROTEIN DUBAI STYLE CHOCOLATE 31-32  
PROTEIN DUBAI CHOCOLATE STYLE BARS 33-35  
PROTEIN DUBAI CHOCOLATE STYLE SPREAD 36-38

## PROTEIN SNACKS - SWEET

PROTEIN BONS 39-41  
PROTEIN WAFERS 42-43  
PROTEIN FRUITS 44-45  
PROTEIN NUTS 46-47

## PROTEIN SNACKS - SALTY

PROTEIN CHIPS 48-50  
PROTEIN FREEZE-DRIED CHEESE 51-52  
PROTEIN CHEESE CRUNCHY BALLS 53-54

## HEALTHY LIFESTYLE PRODUCTS

GINGER SHOTS 55-56  
LYOPHILIZED FRUITS 57-58  
FRUIT JAM 59-60  
PROTEIN BIO CRISPBREAD 61-62  
PROTEIN PASTA 63-64

## DIETARY SUPPLEMENTS

DIETARY SUPPLEMENTS 65-69

ANJ DISTRIBUTION 70-71



# GAM'S BRAND HISTORY

After facing personal health challenges related to a close family member's eating disorder, the founders decided to **dedicate their lives to promoting an active lifestyle and balanced nutrition**. A reputable nutrition specialist **recommended incorporating protein bars into the diet** as part of the treatment, inspiring the founders **to explore the potential** of these products in **supporting overall stamina** and offering **a guilt-free alternative to traditional sweet treats**.

Fueled by enthusiasm, they began **collaborating with a local food producer**, refining their ideas into **tangible product concepts**. Within a year, they had jointly developed **the first exceptionally tasty and healthy protein bar recipes**, ready for production. While many protein bars on the market were **loaded** with sugar, soy, and whey, their ambition was **to create the cleanest possible alternatives**.

These products were designed **not only for active individuals** but also **for those looking to manage their weight** and incorporate **more activity into their daily lives**. The founders believed that **protein-enhanced foods** are **not just for athletes**, but can also be **beneficial in everyday, challenging life situations** to help **Gain And Maintain Stamina**.

In 2018, they **founded a small business** and introduced the new consumer brand, **GAM's**, promoting and selling protein bars to **new consumers, fitness centers, and sports clubs**.

By 2021, this initiative had evolved into **Gam's, a successful company** with **a well-known e-commerce platform** serving the Czech Republic and Slovakia.

In 2024, **ANJ-distribution**, a young and dynamic distribution company recognized for its **professional processes and experience in the food industry**, took over (CEO - Robert Palka, CTO - Jozef Štefaňák). Company brings **direct production capabilities** for protein-based products, **enhancing expertise in product development, production, sales, and marketing**.

This transition is set to elevate the **Gam's brand to new strategic heights, expanding its consumer base, market reach, and geographical presence**.



# WHO IS OUR

## CORE TARGET

ACTIVE, HEALTH-CONSCIOUS INDIVIDUALS

---

### Lifestyle:

Regularly engages in physical activities such as running, cycling, yoga, gym workouts, and hiking

Prioritizes mental and physical well-being

Interested in holistic health, including diet, exercise, and mental health

### Purchasing behavior:

Prefers convenient, healthy snack options that complement their active lifestyle

Looks for products with specific health benefits, such as protein, collagen, and fiber

Willing to invest in premium fitness and health products

# TARGET GROUP?

## WIDER TARGET

ASPIRING ACTIVE, HEALTH-CONSCIOUS INDIVIDUALS

---

### **Lifestyle:**

Currently more sedentary or inactive but motivated to change

Interested in learning about and adopting healthier habits

May feel stressed or dissatisfied with current health and well-being

### **Purchasing behavior:**

Interested in convenient, tasty, and healthy snack options that support their lifestyle changes

Prefers products that provide clear health benefits, such as protein, collagen, and fiber-enhanced snacks

Open to trying new products and services aimed at improving health

Values affordability and accessibility in health and fitness products



**GAM'S ABBREVIATION:**

**GAIN  
AND  
MAINTAIN  
STAMINA**

**CORE TARGET**

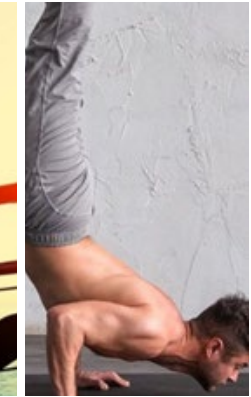
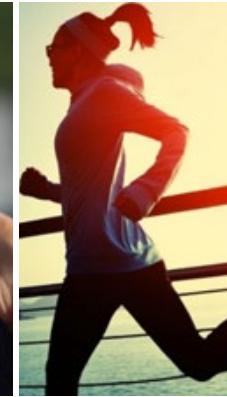
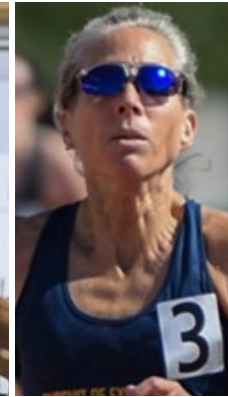
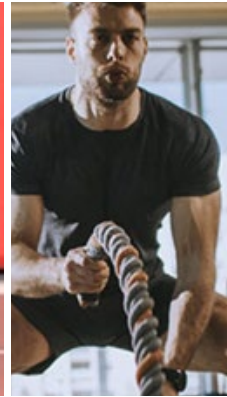
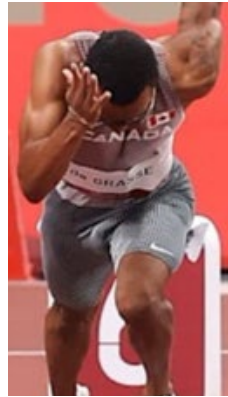
**ENERGY**

**STRENGTH**

**STAYING  
POWER**

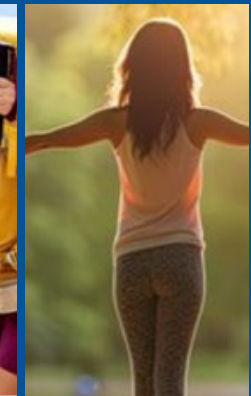
**ENDURANCE**

**VITALITY**



**WIDER TARGET**

Healthy lifestyle  
*Gam's*  
**PROTEIN**



**ENERGY**

**STRENGTH**

**STAYING  
POWER**

**ENDURANCE**

**VITALITY**



# WHAT DO WE OFFER?

Gam's portfolio provides a **range of exceptionally tasty protein-enhanced snacks** with **collagen and fiber**, alongside **food supplements** designed to **support your stamina**.

Our products help you **easily achieve your active and health-conscious goals** by **delivering the nutrients you need** for **optimal performance** and **well-being**, made from **high-quality ingredients**.

Our snacks and supplements are **suitable for everyone**, ensuring you can **enjoy the benefits of a healthy lifestyle without compromise**.

We also offer a product range for **vegan** consumers.

# KEY ORIGIN OF PROTEIN BY CATEGORY

Milk



CORE PROTEIN BAR  
MULTILAYER PROTEIN BAR  
PROTEIN BONS  
PROTEIN FRUIT

Soy



VEGAN PROTEIN BAR  
NUTS PROTEIN BAR  
CEREAL PROTEIN BAR

Rice



VEGAN PROTEIN BAR

Lentil



PROTEIN CHIPS

Collagen



CORE PROTEIN BAR  
MULTILAYER PROTEIN BAR  
PROTEIN BONS  
CEREAL PROTEIN BAR

Healthy lifestyle



Healthy lifestyle  
*Gam's*  
PROTEIN



# GAM'S PROTEIN CORE BARS

Our **Gam's protein bars** are a **true celebration of taste**, offering a **variety of irresistible flavour combinations** that cater to every craving. Crafted with an **original recipe** and **genuine ingredients**, these bars are not only **extra soft** and **nutritious** but also deliver a **rich, satisfying taste experience**.

Each bar is gluten-free, contains no added sugar, and is palm-oil-free, ensuring that you can **indulge guilt-free**. With protein levels reaching up to 35%, our bars are designed to **fuel your body** while **delighting your taste buds**—all presented with an **iconic modern design**. You can choose from **9 delicious flavours** created to satisfy all taste profiles—just pick your favourite and enjoy.

gluten FREE | with COLLAGEN | NO added sugars | palm-oil FREE



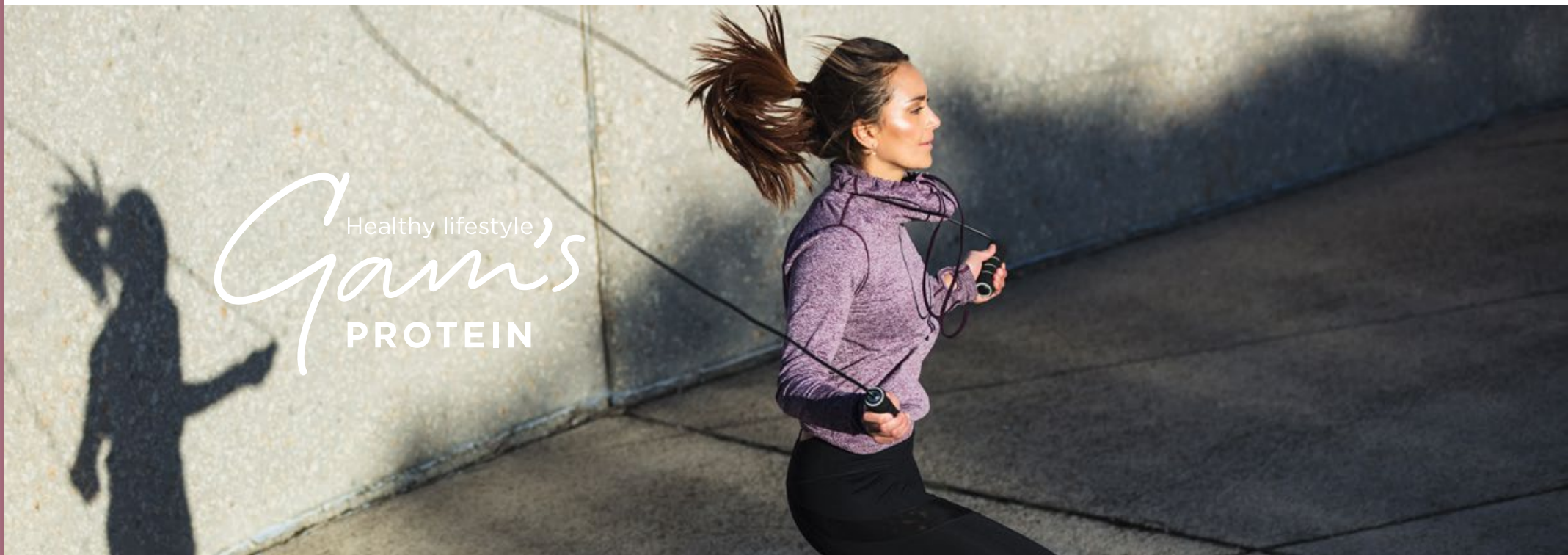
**MILK PROTEIN CONCENTRATE (MPC)**  
Complete proteins for muscle growth and regeneration.



**HYDROLYZED COLLAGEN**  
Supports joints, skin health, and smooth soft texture.



**FLAVOUR SELECTION**  
9 tastes to satisfy every craving and preference.



Healthy lifestyle  
*Gam's*  
PROTEIN

## VANILLA



### NUTRITIONAL VALUES PER 100 g

Energy:.....1 705 kJ/408 kcal  
 Fat:.....17 g  
 of which saturates:.....9,1 g  
 Carbohydrate:.....37 g  
 of which sugars:.....5,2 g  
 of which polyols:.....19 g  
 Fibre:.....1,1 g  
 Protein:.....34 g  
 Salt:.....0,57 g

#### Ingredients:

Mixture of proteins 33% (**milk** protein concentrate, hydrolyzed collagen peptides 10%, whole **milk** powder), white coating with maltitol and protein 22% [sweetener (maltitols), completely hydrogenated rapeseed and coconut oil, sweet **whey**, skimmed **milk** powder, **milk** protein concentrate 10%, emulsifier (lecithins), flavouring], paste with vanillin flavour with maltitol 14% [sweetener (maltitols), rapeseed oil, cocoa butter, sweet **whey** powder, skimmed **milk** powder, emulsifier (lecithins), flavouring], humectant (glycerol), sweetener (maltitols), **soya** protein extrudates 5% (**soya** protein, tapioca starch, salt), rapeseed oil, water, flavourings, thickener (acacia gum), emulsifier (mono- and diglycerides of fatty acids), antioxidant (tocopherol-rich extract), salt. May contain **peanuts** and **nuts**.

EAN/pcs: 8585067200942

## CHOCOLATE



### NUTRITIONAL VALUES PER 100 g

Energy:.....1 698 kJ/406 kcal  
 Fat:.....18 g  
 of which saturates:.....9,7 g  
 Carbohydrate:.....34 g  
 of which sugars:.....3,1 g  
 of which polyols:.....20 g  
 Fibre:.....2,1 g  
 Protein:.....35 g  
 Salt:.....0,49 g

#### Ingredients:

Mixture of proteins 34% (**milk** protein concentrate, hydrolyzed collagen peptides 12%, whole **milk** powder), milk coating with maltitol and protein 22% [sweetener (maltitols), completely hydrogenated rapeseed and coconut oil, **milk** protein concentrate 10%, skimmed **milk** powder, cocoa powder, emulsifier (lecithins), flavouring], paste with vanillin flavour with maltitol 12% [sweetener (maltitols), rapeseed oil, cocoa butter, sweet **whey** powder, skimmed **milk** powder, emulsifier (lecithins), flavouring], humectant (glycerol), sweetener (maltitols), **soya** protein extrudates 5% (**soya** protein, tapioca starch, salt), rapeseed oil, water, fat reduced cocoa powder 2,6% [fat reduced cocoa powder, acidity regulator (potassium carbonates)], flavourings, thickener (acacia gum), emulsifier (mono- and diglycerides of fatty acids), antioxidant (tocopherol-rich extract), salt. May contain **peanuts** and **nuts**.

EAN/pcs: 8585067200911

## RASPBERRY



### NUTRITIONAL VALUES PER 100 g

Energy:.....1 726 kJ/413 kcal  
 Fat:.....18 g  
 of which saturates:.....10 g  
 Carbohydrate:.....37 g  
 of which sugars:.....5,5 g  
 of which polyols:.....20 g  
 Fibre:.....1,7 g  
 Protein:.....32 g  
 Salt:.....0,56 g

#### Ingredients:

Mixture of proteins 31% (**milk** protein concentrate, hydrolyzed collagen peptides 11%, whole **milk** powder), white coating with maltitol and protein 22% [sweetener (maltitols), completely hydrogenated rapeseed and coconut oil, sweet **whey**, skimmed **milk** powder, **milk** protein concentrate 10%, emulsifier (lecithins), flavouring], paste with vanillin flavour with maltitol 14% [sweetener (maltitols), rapeseed oil, cocoa butter, sweet **whey** powder, skimmed **milk** powder, emulsifier (lecithins), flavouring], sweetener (maltitols), humectant (glycerol), **soya** protein extrudates 5% (**soya** protein, tapioca starch, salt), rapeseed oil, water, grated coconut, pieces of lyophilized raspberries 1,1%, acidity regulator (lactic acid), flavourings, thickener (acacia gum), vegetable colouring concentrate [juice from beetroot concentrate, colour (carotenes), acid (citric acid), preservative (potassium sorbate)], emulsifier (mono- and diglycerides of fatty acids), antioxidant (tocopherol-rich extract), salt. May contain **peanuts** and **nuts**.

EAN/pcs: 8585067200935

Weight	Shelf life	Pcs. in box
50 g	365	24

## COCONUT CHEESECAKE



### NUTRITIONAL VALUES PER 100 g

Energy:.....1 681 kJ/402 kcal  
 Fat:.....20 g  
 of which saturates:.....11 g  
 Carbohydrate:.....28 g  
 of which sugars:.....3,8 g  
 of which polyols:.....16 g  
 Fibre:.....8,0 g  
 Protein:.....29 g  
 Salt:.....0,58 g

#### Ingredients:

Mixture of proteins 31% (**milk** protein concentrate, hydrolyzed collagen peptides 11%, whole **milk** powder), milk coating with maltitol and protein 22% [sweetener (maltitols), completely hydrogenated rapeseed and coconut oil, **milk** protein concentrate 10%, skimmed **milk** powder, cocoa powder, emulsifier (lecithins), flavouring], paste with caramel flavour 14% [fructooligosaccharides, whole **milk** powder, water, cocoa butter, sunflower oil, humectant (glycerol), flavouring, emulsifier (lecithins), salt], humectant (glycerol), sweetener (maltitols), crushed **almonds** 6%, rapeseed oil, grated coconut 2,9%, water, acidity regulator (lactic acid), salt 0,3%, flavourings, thickener (acacia gum), emulsifier (mono- and diglycerides of fatty acids), antioxidant (tocopherol-rich extract). May contain **peanuts, soya** and other **nuts**.

EAN/pcs: 8585067200881

## BLACKCURRANT



### NUTRITIONAL VALUES PER 100 g

Energy:.....1 721 kJ/411 kcal  
 Fat:.....18 g  
 of which saturates:.....9,2 g  
 Carbohydrate:.....34 g  
 of which sugars:.....6,1 g  
 of which polyols:.....18 g  
 Fibre:.....1,6 g  
 Protein:.....34 g  
 Salt:.....0,58 g

#### Ingredients:

Mixture of proteins 33% (**milk** protein concentrate, hydrolyzed collagen peptides 12%, whole **milk** powder), white coating with maltitol and protein 22% [sweetener (maltitols), completely hydrogenated rapeseed and coconut oil, sweet **whey**, skimmed **milk** powder, **milk** protein concentrate 10%, emulsifier (lecithins), flavouring], paste with vanillin flavour with maltitol 14% [sweetener (maltitols), rapeseed oil, cocoa butter, sweet **whey** powder, skimmed **milk** powder, emulsifier (lecithins), flavouring], humectant (glycerol), sweetener (maltitols), rapeseed oil, **soya** protein extrudates 5% (**soya** protein, tapioca starch, salt), water, pieces of lyophilized blackcurrants 2,3%, acidity regulator (lactic acid), flavourings, thickener (acacia gum), colouring concentrate from hibiscus and carrot [concentrate from hibiscus and carrot, water, antioxidant (citric acid)], emulsifier (mono- and diglycerides of fatty acids), antioxidant (tocopherol-rich extract), salt. May contain **peanuts** and **nuts**.

EAN/pcs: 8585067200928

Weight	Shelf life	Pcs. in box
50 g	365	24

## SALTED CARAMEL



### NUTRITIONAL VALUES PER 100 g

Energy:.....1 547 kJ/370 kcal  
 Fat:.....15 g  
 of which saturates:.....9,2 g  
 Carbohydrate:.....28 g  
 of which sugars:.....3,6 g  
 of which polyols:.....17 g  
 Fibre:.....7,0 g  
 Protein:.....34 g  
 Salt:.....0,89 g

#### Ingredients:

Mixture of proteins 33% (**milk** protein concentrate, hydrolyzed collagen peptides 11%, whole **milk** powder), milk coating with maltitol and protein 22% [sweetener (maltitols), completely hydrogenated rapeseed and coconut oil, **milk** protein concentrate 10%, skimmed **milk** powder, cocoa powder, emulsifier (lecithins), flavouring], paste with caramel flavour 14% [fructooligosaccharides, whole **milk** powder, water, cocoa butter, sunflower oil, humectant (glycerol), flavouring, emulsifier (lecithins), salt], sweetener (maltitols), humectant (glycerol), **soya** protein extrudates 5% (**soya** protein, tapioca starch, salt), rapeseed oil, water, salt 0,5%, flavourings, thickener (acacia gum), emulsifier (mono- and diglycerides of fatty acids), antioxidant (tocopherol-rich extract). May contain **peanuts** and **nuts**.

EAN/pcs: 8585067200904

## PISTACHIO



### NUTRITIONAL VALUES PER 100 g

Energy:.....1 575 kJ/376 kcal  
 Fat:.....15 g  
 of which saturates:.....8,7 g  
 Carbohydrate:.....30 g  
 of which sugars:.....5,5 g  
 of which polyols:.....14 g  
 Fibre:.....6,8 g  
 Protein:.....33 g  
 Salt:.....0,53 g

#### Ingredients:

Mixture of proteins 33% (**milk** protein concentrate, hydrolyzed collagen peptides 10%, whole **milk** powder), white coating with maltitol and protein 22% [sweetener (maltitols), completely hydrogenated rapeseed and coconut oil, sweet **whey**, skimmed **milk** powder, **milk** protein concentrate 10%, emulsifier (lecithins), flavouring], paste with caramel flavour 14% [fructooligosaccharides, whole **milk** powder, water, cocoa butter, sunflower oil, humectant (glycerol), flavouring, emulgator (lecithins), salt], humectant (glycerol), sweetener (maltitols), **soya** protein extrudates 5% (**soya** protein, tapioca starch, salt), rapeseed oil, water, crushed **pistachio nuts** 1%, flavouring, thickener (acacia gum), colour (copper complexes of chlorophylls and chlorophyllins), emulsifier (mono- and diglycerides of fatty acids), antioxidant (tocopherol-rich extract), salt. May contain **peanuts** and other **nuts**.

EAN/pcs: 8585067202052

## BANANA



### NUTRITIONAL VALUES PER 100 g

Energy:.....1 704 kJ/407 kcal  
 Fat:.....17 g  
 of which saturates:.....9,6 g  
 Carbohydrate:.....35 g  
 of which sugars:.....5,0 g  
 of which polyols:.....18 g  
 Fibre:.....1,5 g  
 Protein:.....34 g  
 Salt:.....0,49 g

#### Ingredients:

Mixture of proteins 34% (**milk** protein concentrate, hydrolyzed collagen peptides 12%, whole **milk** powder), dark coating with maltitol and protein 22% [sweetener (maltitols), completely hydrogenated rapeseed and coconut oil, cocoa powder, **milk** protein concentrate 10%, emulsifier (lecithins), flavouring], paste with vanillin flavour with maltitol 12% [sweetener (maltitols), rapeseed oil, cocoa butter, sweet **whey** powder, skimmed **milk** powder, emulsifier (lecithins), flavouring], humectant (glycerol), sweetener (maltitols), **soya** protein extrudates 5% (**soya** protein, tapioca starch, salt), rapeseed oil, powder from lyophilized bananas 3,2%, water, flavourings, thickener (acacia gum), emulsifier (mono- and diglycerides of fatty acids), antioxidant (tocopherol-rich extract), colours (curcumin, plain caramel), salt. May contain **peanuts** and **nuts**.

EAN/pcs: 8585067201154

## COCONUT



### NUTRITIONAL VALUES PER 100 g

Energy:.....1 756 kJ/420 kcal  
 Fat:.....20 g  
 of which saturates:.....11 g  
 Carbohydrate:.....34 g  
 of which sugars:.....3,2 g  
 of which polyols:.....18 g  
 Fibre:.....1,8 g  
 Protein:.....33 g  
 Salt:.....0,48 g

#### Ingredients:

Mixture of proteins 32% (**milk** protein concentrate, hydrolyzed collagen peptides 12%, whole **milk** powder), dark coating with maltitol and protein 22% [sweetener (maltitols), completely hydrogenated rapeseed and coconut oil, cocoa powder, **milk** protein concentrate 10%, emulsifier (lecithins), flavouring], paste with vanillin flavour with maltitol 12% [sweetener (maltitols), rapeseed oil, cocoa butter, sweet **whey** powder, skimmed **milk** powder, emulsifier (lecithins), flavouring], sweetener (maltitols), humectant (glycerol), rapeseed oil, **soya** protein extrudates 5% (**soya** protein, tapioca starch, salt), grated coconut 3,1%, water, thickener (acacia gum), flavourings, emulsifier (mono- and diglycerides of fatty acids), antioxidant (tocopherol-rich extract), colour (plain caramel), salt. May contain **peanuts** and **nuts**.

EAN/pcs: 8585067200898

Weight	Shelf life	Pcs. in box
50 g	365	24

# GAM'S PROTEIN CORE BARS

## SPLASH EDITION

Our **Gam's Splash protein bars** transform every bite into a **refreshing moment** inspired by your favourite cocktails. Crafted with **genuine ingredients** and an **extra soft texture**, they combine **nourishment** with a **delicious taste experience**. Each bar is **gluten-free**, has **no added sugar**, and contains **no palm oil**, so you can **indulge guilt-free anytime**. With protein levels up to 35%, they **fuel your body**, **revive your senses**, and bring a touch of summer wherever you go. Discover a unique snack that blends **functional nutrition** with **irresistible flavours** you'll love.

Choose from **3 vibrant flavours**—**Mojito**, **Piña Colada**, and **Sex On The Beach**—and let yourself be transported to a **beachside escape**. Just pick your favourite and enjoy.

gluten FREE | with COLLAGEN | NO added sugars | palm-oil FREE | alcohol FREE



**MILK PROTEIN CONCENTRATE (MPC)**  
Complete proteins for muscle growth and regeneration.



**HYDROLYZED COLLAGEN**  
Supports joints, skin health, and smooth soft texture.



**COCKTAIL-INSPIRED FLAVOURS**  
Refreshing tastes that awaken and energise your senses.

Healthy lifestyle  
*Gam's*  
PROTEIN



## PINA COLADA



### NUTRITIONAL VALUES PER 100 g

Energy:.....1 762 kJ/421 kcal  
 Fat:.....19 g  
 of which saturates:.....11 g  
 Carbohydrate:.....34 g  
 of which sugars:.....6,4 g  
 of which polyols:.....15 g  
 Fibre:.....4,9 g  
 Protein:.....31 g  
 Salt:.....0,56 g

#### Ingredients:

Mixture of proteins 30% (**milk** protein concentrate, hydrolyzed collagen peptides 11%, whole **milk** powder), white coating with maltitol and protein 22% [sweetener (maltitols), completely hydrogenated rapeseed and coconut oil, sweet **whey**, skimmed **milk** powder, **milk** protein concentrate 10%, emulsifier (lecithins), flavouring], paste with vanillin flavour with maltitol 14% [sweetener (maltitols), rapeseed oil, cocoa butter, sweet **whey** powder, skimmed **milk** powder, emulsifier (lecithins), flavouring], humectant (glycerol), sweetener (maltitols), **soya** protein extrudates 5% (**soya** protein, tapioca starch, salt), rapeseed oil, grated coconut 2,4%, water, powder of lyophilized pineapple 1,5%, acidity regulator (lactic acid), flavourings, thickener (acacia gum), colour (curcumin), emulsifier (mono- and diglycerides of fatty acids), antioxidant (tocopherol-rich extract), salt. May contain **peanuts** and **nuts**.

EAN/pcs: 8585067201147

## MOJITO



### NUTRITIONAL VALUES PER 100 g

Energy:.....1 736 kJ/415 kcal  
 Fat:.....18 g  
 of which saturates:.....9,8 g  
 Carbohydrate:.....35 g  
 of which sugars:.....3,3 g  
 of which polyols:.....19 g  
 Fibre:.....1,4 g  
 Protein:.....34 g  
 Salt:.....0,50 g

#### Ingredients:

Mixture of proteins 34% (**milk** protein concentrate, hydrolyzed collagen peptides 12%, whole **milk** powder), dark coating with maltitol and protein 22% [sweetener (maltitols), completely hydrogenated rapeseed and coconut oil, cocoa powder, **milk** protein concentrate 10%, emulsifier (lecithins), flavouring], paste with vanillin flavour with maltitol 14% [sweetener (maltitols), rapeseed oil, cocoa butter, sweet **whey** powder, skimmed **milk** powder, emulsifier (lecithins), flavouring], humectant (glycerol), sweetener (maltitols), **soya** protein extrudates 5% (**soya** protein, tapioca starch, salt), rapeseed oil, water, acidity regulator (lactic acid), colour (copper complexes of chlorophylls and chlorophyllins), flavourings, thickener (acacia gum), emulsifier (mono- and diglycerides of fatty acids), antioxidant (tocopherol-rich extract), salt. May contain **peanuts** and **nuts**.

EAN/pcs: 8585067201208

## SEX ON THE BEACH



### NUTRITIONAL VALUES PER 100 g

Energy:.....1 740 kJ/416 kcal  
 Fat:.....18 g  
 of which saturates:.....9,2 g  
 Carbohydrate:.....33 g  
 of which sugars:.....5,2 g  
 of which polyols:.....15 g  
 Fibre:.....4,5 g  
 Protein:.....35 g  
 Salt:.....0,59 g

#### Ingredients:

Mixture of proteins 34% (**milk** protein concentrate, hydrolyzed collagen peptides 12%, whole **milk** powder), white coating with maltitol and protein 22% [sweetener (maltitols), completely hydrogenated rapeseed and coconut oil, sweet **whey**, skimmed **milk** powder, **milk** protein concentrate 10%, emulsifier (lecithins), flavouring], paste with vanillin flavour with maltitol 14% [sweetener (maltitols), rapeseed oil, cocoa butter, sweet **whey** powder, skimmed **milk** powder, emulsifier (lecithins), flavouring], humectant (glycerol), sweetener (maltitols), **soya** protein extrudates 5% (**soya** protein, tapioca starch, salt), rapeseed oil, water, acidity regulator (lactic acid), flavourings, thickener (acacia gum), vegetable colouring concentrate [juice from beetroot concentrate, colour (carotenes), acid (citric acid), preservative (potassium sorbate)], colour (carotenes), emulsifier (mono- and diglycerides of fatty acids), antioxidant (tocopherol-rich extract), salt. May contain **peanuts** and **nuts**.

EAN/pcs: 8585067201284

Weight	Shelf life	Pcs. in box
50 g	365	24

# GAM'S PROTEIN MULTILAYER BARS

Our **Gam's Multilayer protein bars** are a true **celebration of taste**, delivering a unique **double-layered experience** you won't find in ordinary snacks. Each bar combines a **smooth, creamy caramel layer** with **crunchy nuts**, creating an **indulgent texture** and a **rich, satisfying flavour**. Carefully crafted **without added sugars**, these bars are not only **delicious** but also **nourishing** and **supportive of an active lifestyle**. Every bite offers up to **27% protein**, helping you **fuel your day** while enjoying a moment of **pure pleasure**—completely **guilt-free**.

With a selection of **delicious flavours** such as **Cookies, Chocolate, Strawberry, and Vanilla**, there's a perfect choice to match every taste. Just pick your favourite and enjoy.

**gluten FREE | with COLLAGEN | NO added sugars | palm-oil FREE**



#### MPC & HYDROLYZED COLLAGEN

Complete proteins for muscle growth and regeneration.



#### DOUBLE CARAMEL LAYER

Smooth, sweet taste for an unparalleled indulgent experience.



#### FLAVOUR SELECTION

4 tastes to satisfy every craving and preference.

Healthy lifestyle  
*Gam's*  
 PROTEIN



## COOKIES



### NUTRITIONAL VALUES PER 100 g

Energy:.....1 600 kJ/382 kcal  
 Fat:.....19 g  
 of which saturates:.....9,7 g  
 Carbohydrate:.....25 g  
 of which sugars:.....6,9 g  
 of which polyols:.....12 g  
 Fibre:.....13 g  
 Protein:.....27 g  
 Salt:.....0,39 g

#### Ingredients:

Paste with caramel flavour 25% [fructooligosaccharides, whole **milk** powder, water, cocoa butter, sunflower oil, humectant (glycerol), flavouring, emulsifier (lecithins), salt], mixture of proteins 24% (**milk** protein concentrate, hydrolyzed collagen peptides 8,1%, whole **milk** powder), white coating with maltitol and protein 22% [sweetener (maltitols), completely hydrogenated rapeseed and coconut oil, sweet **whey**, skimmed **milk** powder, **milk** protein concentrate 10%, emulsifier (lecithins), flavouring], roasted **peanuts** 10%, sweetener (maltitols), humectant (glycerol), rapeseed oil, water, **soya** protein extrudates (**soya** protein, tapioca starch, salt), colour (vegetable carbon), flavourings, thickener (acacia gum), emulsifier (mono- and diglycerides of fatty acids), antioxidant (tocopherol-rich extract), salt. May contain **nuts**.

EAN/pcs: 8585067200805

## VANILLA



### NUTRITIONAL VALUES PER 100 g

Energy:.....1 591 kJ/380 kcal  
 Fat:.....19 g  
 of which saturates:.....10 g  
 Carbohydrate:.....26 g  
 of which sugars:.....5,1 g  
 of which polyols:.....14 g  
 Fibre:.....13 g  
 Protein:.....26 g  
 Salt:.....0,26 g

#### Ingredients:

Paste with caramel flavour 25% [fructooligosaccharides, whole **milk** powder, water, cocoa butter, sunflower oil, humectant (glycerol), flavouring, emulsifier (lecithins), salt], mixture of proteins 24% (**milk** protein concentrate, hydrolyzed collagen peptides 7,6%, whole **milk** powder), milk coating with maltitol and protein 22% [sweetener (maltitols), completely hydrogenated rapeseed and coconut oil, **milk** protein concentrate 10%, skimmed **milk** powder, cocoa powder, emulsifier (lecithins), flavouring], roasted **peanuts** 10%, humectant (glycerol), sweetener (maltitols), rapeseed oil, water, flavourings, thickener (acacia gum), emulsifier (mono- and diglycerides of fatty acids), antioxidant (tocopherol-rich extract), salt. May contain **soya** and **nuts**.

EAN/pcs: 8585067200799

## STRAWBERRY



### NUTRITIONAL VALUES PER 100 g

Energy:.....1 624 kJ/388 kcal  
 Fat:.....20 g  
 of which saturates:.....10 g  
 Carbohydrate:.....27 g  
 of which sugars:.....7,3 g  
 of which polyols:.....13 g  
 Fibre:.....13 g  
 Protein:.....25 g  
 Salt:.....0,34 g

#### Ingredients:

Paste with caramel flavour 25% [fructooligosaccharides, whole **milk** powder, water, cocoa butter, sunflower oil, humectant (glycerol), flavouring, emulsifier (lecithins), salt], mixture of proteins 23% (**milk** protein concentrate, hydrolyzed collagen peptides 8,2%, whole **milk** powder), white coating with maltitol and protein 22% [sweetener (maltitols), completely hydrogenated rapeseed and coconut oil, sweet **whey**, skimmed **milk** powder, **milk** protein concentrate 10%, emulsifier (lecithins), flavouring], roasted **peanuts** 10%, sweetener (maltitols), humectant (glycerol), rapeseed oil, water, grated coconut, pieces of lyophilized strawberries 0,7%, acidity regulator (lactic acid), flavourings, thickener (acacia gum), emulsifier (mono- and diglycerides of fatty acids), antioxidant (tocopherol-rich extract), salt. May contain **soya** and **nuts**.

EAN/pcs: 8585067200812

## CHOCOLATE



### NUTRITIONAL VALUES PER 100 g

Energy:.....1 601 kJ/383 kcal  
 Fat:.....20 g  
 of which saturates:.....10 g  
 Carbohydrate:.....24 g  
 of which sugars:.....5,0 g  
 of which polyols:.....14 g  
 Fibre:.....13 g  
 Protein:.....26 g  
 Salt:.....0,29 g

#### Ingredients:

Paste with caramel flavour 25% [fructooligosaccharides, whole **milk** powder, water, cocoa butter, sunflower oil, humectant (glycerol), flavouring, emulsifier (lecithins), salt], mixture of proteins 24% (**milk** protein concentrate, hydrolyzed collagen peptides 8,5%, whole **milk** powder), milk coating with maltitol and protein 22% [sweetener (maltitols), completely hydrogenated rapeseed and coconut oil, **milk** protein concentrate 10%, skimmed **milk** powder, cocoa powder, emulsifier (lecithins), flavouring], roasted **peanuts** 10%, sweetener (maltitols), humectant (glycerol), rapeseed oil, water, fat reduced cocoa powder 1,1% [fat reduced cocoa powder, acidity regulator (potassium carbonates)], flavourings, thickener (acacia gum), emulsifier (mono- and diglycerides of fatty acids), antioxidant (tocopherol-rich extract), salt. May contain **soya** and **nuts**.

EAN/pcs: 8585067200782

Weight	Shelf life	Pcs. in box
50 g	365	28

# GAM'S PROTEIN POWER BARS

Our **Gam's Protein Power Bars** are a **breakthrough in taste, nutrition, and performance**, offering a revolutionary **50% protein content** that exceeds every expectation. Expertly crafted with a unique blend of **four high-quality protein sources**, each bar combines a **rich, delicious coating** with a **soft texture** you'll love. Whether you need **extra fuel** for **training, recovery, or daily vitality**, these bars deliver **complete nourishment** with every bite.

Each recipe is **gluten-free**, contains **no added sugar**, and is enriched with **L-carnitine, BCAA amino acids, vitamin C, and zinc** to support your **body and mind**. With an impressive protein level and **functional ingredients**, they redefine what a protein bar can be. Choose from **banana, strawberry, or vanilla flavours**, and discover the **power of great taste** and **outstanding nutrition**.

**gluten FREE | with COLLAGEN | NO added sugars | L-CARNITINE | BCAA | VITAMIN C | ZINC**



## PREMIUM PROTEIN BLEND

Four sources for complete amino acids and muscle support.



## L-CARNITINE & BCAA

Promote energy, endurance, and faster recovery.



## VITAMIN C & ZINC

Strengthen immunity and support daily vitality.

Healthy lifestyle,  
*Gam's*  
PROTEIN



## BANANA



### NUTRITIONAL VALUES PER 100 g

Energy:.....1 556 kJ/372 kcal  
 Fat: ..... 11 g  
 of which saturates:..... 4,9 g  
 Carbohydrate:..... 24 g  
 of which sugars:..... 0,6 g  
 of which polyols:..... 13 g  
 Fibre:..... 0,6 g  
 Protein:..... 50 g  
 Salt: .....1,08 g  
 Vitamin C:.....200 mg  
 Zinc:..... 6,0 mg  
 L-carnitine:.....200 mg  
 L-isoleucine:.....250 mg  
 L-leucine:..... 500 mg  
 L-valine: .....250 mg

#### Ingredients:

Mixture of proteins 50% (hydrolyzed collagen peptides, **soya** protein, **milk** protein isolate, **milk** protein concentrate), milk coating with maltitol and protein 12% [sweetener (maltitols), completely hydrogenated rapeseed and coconut oil, **milk** protein concentrate, skimmed **milk** powder, cocoa powder, emulsifier (lecithins), flavouring], humectant (glycerol), sweetener (maltitols), rapeseed oil, **soya** protein extrudates (**soya** protein, tapioca starch, salt), water, amino acid premix 1% (L-isoleucine, L-leucine, L-valine), flavourings, L-carnitine 0,5%, premix of vitamins and minerals (vitamin C, zinc), emulsifier (mono- and diglycerides of fatty acids), colour (curcumin), antioxidant (tocopherol-rich extract), salt, sweetener (sucralose). May contain **peanuts** and **nuts**.

EAN/pcs: 8585067201628

## STRAWBERRY



### NUTRITIONAL VALUES PER 100 g

Energy:.....1 567 kJ/374 kcal  
 Fat: .....10 g  
 of which saturates:..... 4,6 g  
 Carbohydrate:..... 25 g  
 of which sugars:..... 1,6 g  
 of which polyols:..... 12 g  
 Fibre:..... 0,6 g  
 Protein:..... 50 g  
 Salt: .....1,08 g  
 Vitamin C:.....200 mg  
 Zinc:..... 6,0 mg  
 L-carnitine:.....200 mg  
 L-isoleucine:.....250 mg  
 L-leucine:..... 500 mg  
 L-valine: .....250 mg

#### Ingredients:

Mixture of proteins 50% (hydrolyzed collagen peptides, **soya** protein, **milk** protein isolate, **milk** protein concentrate), white coating with maltitol and protein 12% [sweetener (maltitols), completely hydrogenated rapeseed and coconut oil, sweet **whey**, skimmed **milk** powder, **milk** protein concentrate, emulsifier (lecithins), flavouring], humectant (glycerol), sweetener (maltitols), rapeseed oil, **soya** protein extrudates (**soya** protein, tapioca starch, salt), water, amino acid premix 1% (L-isoleucine, L-leucine, L-valine), flavourings, L-carnitine 0,5%, premix of vitamins and minerals (vitamin C, zinc), emulsifier (mono- and diglycerides of fatty acids), colour (carmine), antioxidant (tocopherol-rich extract), salt, sweetener (sucralose). May contain **peanuts** and **nuts**.

EAN/pcs: 8585067201635

## VANILLA



### NUTRITIONAL VALUES PER 100 g

Energy:.....1 558 kJ/372 kcal  
 Fat: ..... 11 g  
 of which saturates:..... 4,9 g  
 Carbohydrate:..... 24 g  
 of which sugars:..... 0,6 g  
 of which polyols:..... 13 g  
 Fibre:..... 0,6 g  
 Protein:..... 50 g  
 Salt: .....1,08 g  
 Vitamin C:.....200 mg  
 Zinc:..... 6,0 mg  
 L-carnitine:.....200 mg  
 L-isoleucine:.....250 mg  
 L-leucine:..... 500 mg  
 L-valine: .....250 mg

#### Ingredients:

Mixture of proteins 50% (hydrolyzed collagen peptides, **soya** protein, **milk** protein isolate, **milk** protein concentrate), milk coating with maltitol and protein 12% [sweetener (maltitols), completely hydrogenated rapeseed and coconut oil, **milk** protein concentrate, skimmed **milk** powder, cocoa powder, emulsifier (lecithins), flavouring], humectant (glycerol), sweetener (maltitols), rapeseed oil, **soya** protein extrudates (**soya** protein, tapioca starch, salt), water, amino acid premix 1% (L-isoleucine, L-leucine, L-valine), flavourings, L-carnitine 0,5%, premix of vitamins and minerals (vitamin C, zinc), emulsifier (mono- and diglycerides of fatty acids), antioxidant (tocopherol-rich extract), salt, sweetener (sucralose). May contain **peanuts** and **nuts**.

EAN/pcs: 8585067201611

Weight	Shelf life	Pcs. in box
40 g	365	30

# GAM'S COLLAGEN BARS

Our **Gam's Collagen Bars** are a true celebration of taste, combining indulgent flavours, a luxuriously **soft texture**, and the richness of real milk chocolate. Each bite is crafted to delight your senses and create a moment of **guilt-free pleasure** any time of day. Whether you crave the richness of **Chocolate Caramel**, the creamy smoothness of **Vanilla**, the sweet-salty blend of **Salted Caramel**, or the tropical touch of **Coconut Cheesecake**, you'll experience a delicious treat that feels like a little dessert.

Every bar is **gluten-free**, made **without added sugars**, and coated in real chocolate for a decadent finish. With up to **30% protein**, they fuel your body while supporting healthy skin, hair, nails, and joints thanks to **collagen** and **milk protein concentrate**. Just pick your favourite and enjoy the perfect balance of taste and nutrition.

**gluten FREE | with COLLAGEN | NO added sugars | REAL chocolate | HIGH fibre | palm-oil FREE**



#### **COLLAGEN & MILK PROTEIN**

Support muscle recovery, skin health, and a soft texture.



#### **MALTITOL**

Natural sweetness with fewer calories and no added sugar.



#### **FLAVOUR SELECTION**

4 tastes to satisfy every craving and preference.



Healthy lifestyle  
**Gam's**  
**PROTEIN**

## COCONUT CHEESECAKE



### NUTRITIONAL VALUES PER 100 g

Energy:..... 1 554 kJ/371 kcal  
 Fat:..... 16 g  
 of which saturates:..... 7,1 g  
 Carbohydrate:..... 29 g  
 of which sugars:..... 4,9 g  
 Fibre:..... 9,8 g  
 Protein:..... 29 g  
 Salt:..... 0,83 g

#### Ingredients:

Mixture of proteins 28% (**milk** protein concentrate, hydrolyzed collagen peptides 10%), milk chocolate with maltitol 22% [sweetener (maltitols), cocoa butter, whole **milk** powder, cocoa mass, emulsifier (lecithins), flavouring], paste with caramel flavour 20% [fructooligosaccharides, whole **milk** powder, water, cocoa butter, sunflower oil, humectant (glycerol), flavouring, emulgator (lecithins), salt], sweetener (maltitols), humectant (glycerol), **soya** protein extrudates 5% (**soya** protein, tapioca starch, salt), rapeseed oil, water, grated coconut 1,5%, acidity regulator (lactic acid), salt 0,4%, flavourings, thickener (acacia gum), emulsifier (mono- and diglycerides of fatty acids), antioxidant (tocopherol-rich extract). May contain **peanuts** and **nuts**.

EAN/pcs: 8585067201895

## SALTED CARAMEL



### NUTRITIONAL VALUES PER 100 g

Energy:..... 1 515 kJ/362 kcal  
 Fat:..... 15 g  
 of which saturates:..... 6,2 g  
 Carbohydrate:..... 29 g  
 of which sugars:..... 4,8 g  
 Fibre:..... 9,6 g  
 Protein:..... 30 g  
 Salt:..... 0,98 g

#### Ingredients:

Mixture of proteins 29% (**milk** protein concentrate, hydrolyzed collagen peptides 9,9%), milk chocolate with maltitol 22% [sweetener (maltitols), cocoa butter, whole **milk** powder, cocoa mass, emulsifier (lecithins), flavouring], paste with caramel flavour 20% [fructooligosaccharides, whole **milk** powder, water, cocoa butter, sunflower oil, humectant (glycerol), flavouring, emulgator (lecithins), salt], sweetener (maltitols), humectant (glycerol), **soya** protein extrudates 5% (**soya** protein, tapioca starch, salt), rapeseed oil, water, salt 0,6%, flavourings, thickener (acacia gum), emulsifier (mono- and diglycerides of fatty acids), antioxidant (tocopherol-rich extract). May contain **peanuts** and **nuts**.

EAN/pcs: 8585067201833

## CHOCOLATE CARAMEL



### NUTRITIONAL VALUES PER 100 g

Energy:..... 1 551 kJ/371 kcal  
 Fat:..... 16 g  
 of which saturates:..... 6,4 g  
 Carbohydrate:..... 28 g  
 of which sugars:..... 4,8 g  
 Fibre:..... 10 g  
 Protein:..... 30 g  
 Salt:..... 0,46 g

#### Ingredients:

Mixture of proteins 28% (**milk** protein concentrate, hydrolyzed collagen peptides 10%), milk chocolate with maltitol 22% [sweetener (maltitols), cocoa butter, whole **milk** powder, cocoa mass, emulsifier (lecithins), flavouring], paste with caramel flavour 20% [fructooligosaccharides, whole **milk** powder, water, cocoa butter, sunflower oil, humectant (glycerol), flavouring, emulgator (lecithins), salt], sweetener (maltitols), humectant (glycerol), rapeseed oil, **soya** protein extrudates 5% (**soya** protein, tapioca starch, salt), water, fat reduced cocoa powder 1,4% [fat reduced cocoa powder, acidity regulator (potassium carbonates)], flavourings, thickener (acacia gum), emulsifier (mono- and diglycerides of fatty acids), antioxidant (tocopherol-rich extract). May contain **peanuts** and **nuts**.

EAN/pcs: 8585067201871

## VANILLA



### NUTRITIONAL VALUES PER 100 g

Energy:..... 1 520 kJ/363 kcal  
 Fat:..... 15 g  
 of which saturates:..... 6,2 g  
 Carbohydrate:..... 29 g  
 of which sugars:..... 4,9 g  
 Fibre:..... 9,6 g  
 Protein:..... 30 g  
 Salt:..... 0,43 g

#### Ingredients:

Mixture of proteins 29% (**milk** protein concentrate, hydrolyzed collagen peptides 9,9%), milk chocolate with maltitol 22% [sweetener (maltitols), cocoa butter, whole **milk** powder, cocoa mass, emulsifier (lecithins), flavouring], paste with caramel flavour 20% [fructooligosaccharides, whole **milk** powder, water, cocoa butter, sunflower oil, humectant (glycerol), flavouring, emulgator (lecithins), salt], sweetener (maltitols), humectant (glycerol), **soya** protein extrudates 5% (**soya** protein, tapioca starch, salt), rapeseed oil, water, flavourings, thickener (acacia gum), emulsifier (mono- and diglycerides of fatty acids), antioxidant (tocopherol-rich extract). May contain **peanuts** and **nuts**.

EAN/pcs: 8585067201857

Weight	Shelf life	Pcs. in box
50 g	365	24

# GAM'S PROTEIN EXTRA-SOFT BARS

Our **Gam's Protein Extra-Soft Bars** take protein snacking to the next level, delivering a unique **extra soft structure** that sets them apart from traditional chewy bars. The smooth bite and balanced taste make them an irresistible choice for consumers who want both functionality and indulgence in every bar.

With **up to 27% protein, low sugar**, and a **source of fibre**, these bars offer a satisfying and nutritious option for on-the-go energy, post-workout recovery, or simply a smarter snack any time of day. Naturally **gluten-free**, they are suitable for a wide range of consumers looking for a guilt-free protein boost. Available in five delicious flavours – **Banana, Chocolate, Coconut, Strawberry, and Vanilla** – each bar is carefully crafted to combine premium ingredients with exceptional taste.

**EXTRA SOFT TEXTURE | UP TO 27% PROTEIN | LOW SUGAR | SOURCE OF FIBRE | GLUTEN FREE**



**MILK & WHEY PROTEINS**  
High-quality protein sources to support muscle maintenance and recovery.



**COLLAGEN PEPTIDES**  
Hydrolyzed collagen to promote skin, joint, and connective tissue health.



**MALTITOL-SWEETENED MILK CHOCOLATE**  
Smooth coating with no added sugar, delivering rich taste with reduced calories.

Healthy lifestyle  
*Gam's*  
PROTEIN



## BANANA



### NUTRITIONAL VALUES PER 100 g

Energy:.....1 667 kJ/400 kcal  
 Fat:.....21 g  
 of which saturates:.....11 g  
 Carbohydrate:.....36 g  
 of which sugars:.....3,6 g  
 of which polyols:.....31 g  
 Fibre:.....4,5 g  
 Protein:.....27 g  
 Salt:.....0,42 g

#### Ingredients:

Milk chocolate with maltitol 22% [sweetener (maltitols), cocoa butter, whole **milk** powder, cocoa mass, fat reduced cocoa powder, emulsifier (lecithins)], cream [sweetener (maltitols), vegetable oils (shea kernel oil, rapeseed oil) in varying proportions, **milk** protein concentrate, fat reduced cocoa powder, emulsifier (lecithins), caramel flavours, colour (carotenes)], sweetener (maltitols), **whey** protein concentrate 6,5%, **soya** protein isolate 6,5%, **milk** protein concentrate 6,5%, humectant (glycerol), hydrolyzed collagen peptides 4%, oligofructose (soluble fibre), thickener [polydextrose (fibre)], shea kernel oil, **soya** protein extrudates (**soya** protein, tapioca starch), rapeseed oil, white chocolate with maltitol [sweetener (maltitols), cocoa butter, whole **milk** powder, calcium caseinate (contains **milk**), emulsifier (lecithins), vanilla extract], pieces from lyophilized bananas 1%, skimmed **milk** powder, water, emulsifier (**soya** lecithin), natural banana flavour, colour (carotenes), acid (citric acid), salt. May contain **peanuts** and **nuts**.

EAN/pcs: 8585067203578

## CHOCOLATE



### NUTRITIONAL VALUES PER 100 g

Energy:.....1 669 kJ/401 kcal  
 Fat:.....21 g  
 of which saturates:.....11 g  
 Carbohydrate:.....36 g  
 of which sugars:.....2,8 g  
 of which polyols:.....31 g  
 Fibre:.....4,8 g  
 Protein:.....27 g  
 Salt:.....0,42 g

#### Ingredients:

Milk chocolate with maltitol 22% [sweetener (maltitols), cocoa butter, whole **milk** powder, cocoa mass, fat reduced cocoa powder, emulsifier (lecithins)], cream [sweetener (maltitols), vegetable oils (shea kernel oil, rapeseed oil) in varying proportions, **milk** protein concentrate, fat reduced cocoa powder, emulsifier (lecithins), caramel flavours, colour (carotenes)], sweetener (maltitols), **whey** protein concentrate 6,5%, **soya** protein isolate 6,5%, **milk** protein concentrate 6,5%, humectant (glycerol), hydrolyzed collagen peptides 3,5%, oligofructose (soluble fibre), thickener [polydextrose (fibre)], **soya** protein extrudates (**soya** protein, tapioca starch), shea kernel oil, rapeseed oil, white chocolate with maltitol [sweetener (maltitols), cocoa butter, whole **milk** powder, calcium caseinate (contains **milk**), emulsifier (lecithins), vanilla extract], fat reduced cocoa powder, water, skimmed **milk** powder, natural cocoa flavour, emulsifier (**soya** lecithin), natural caramel flavour, salt. May contain **peanuts** and **nuts**.

EAN/pcs: 8585067203615

Weight	Shelf life	Pcs. in box
40 g	365	18

## COCONUT



### NUTRITIONAL VALUES PER 100 g

Energy:.....1 729 kJ/415 kcal  
 Fat:.....23 g  
 of which saturates:.....13 g  
 Carbohydrate:.....36 g  
 of which sugars:.....2,9 g  
 of which polyols:.....30 g  
 Fibre:.....4,2 g  
 Protein:.....26 g  
 Salt:.....0,40 g

#### Ingredients:

Milk chocolate with maltitol 22% [sweetener (maltitols), cocoa butter, whole **milk** powder, cocoa mass, fat reduced cocoa powder, emulsifier (lecithins)], cream [sweetener (maltitols), vegetable oils (shea kernel oil, rapeseed oil) in varying proportions, **milk** protein concentrate, fat reduced cocoa powder, emulsifier (lecithins), caramel flavours, colour (carotenes)], sweetener (maltitols), **whey** protein concentrate 6,5%, **soya** protein isolate 6,5%, **milk** protein concentrate 6,5%, humectant (glycerol), hydrolyzed collagen peptides 3,5%, oligofructose (soluble fibre), thickener [polydextrose (fibre)], shea kernel oil, **soya** protein extrudates (**soya** protein, tapioca starch), grated coconut 2,5%, rapeseed oil, white chocolate with maltitol [sweetener (maltitols), cocoa butter, whole **milk** powder, calcium caseinate (contains **milk**), emulsifier (lecithins), vanilla extract], water, skimmed **milk** powder, emulsifier (**soya** lecithin), natural coconut flavour, natural vanilla flavour, salt. May contain **peanuts** and **nuts**.

EAN/pcs: 8585067203592

VANILLA



NUTRITIONAL VALUES PER 100 g

Energy:.....1 703 kJ/409 kcal  
 Fat:..... 22 g  
 of which saturates:.....12 g  
 Carbohydrate:..... 36 g  
 of which sugars:.....2,8 g  
 of which polyols:..... 31 g  
 Fibre:.....4,4 g  
 Protein:..... 27 g  
 Salt:..... 0,41 g

Ingredients:

Milk chocolate with maltitol 22% [sweetener (maltitols), cocoa butter, whole **milk** powder, cocoa mass, fat reduced cocoa powder, emulsifier (lecithins)], cream [sweetener (maltitols), vegetable oils (shea kernel oil, rapeseed oil) in varying proportions, **milk** protein concentrate, fat reduced cocoa powder, emulsifier (lecithins), caramel flavours, colour (carotenes)], sweetener (maltitols), **whey** protein concentrate 6,5%, **soya** protein isolate 6,5%, **milk** protein concentrate 6,5%, humectant (glycerol), hydrolyzed collagen peptides 4%, oligofructose (soluble fibre), thickener [polydextrose (fibre)], shea kernel oil, **soya** protein extrudates (**soya** protein, tapioca starch), rapeseed oil, white chocolate with maltitol [sweetener (maltitols), cocoa butter, whole **milk** powder, calcium caseinate (contains **milk**), emulsifier (lecithins), vanilla extract], grated coconut, water, natural vanilla flavour, skimmed **milk** powder, emulsifier (**soya** lecithin), salt. May contain **peanuts** and **nuts**.

EAN/pcs: 8585067203639

STRAWBERRY



NUTRITIONAL VALUES PER 100 g

-

COMING SOON

EAN/pcs: 8585067203653

Weight	Shelf life	Pcs. in box
40 g	365	18

# GAM'S PROTEIN VEGAN BARS

Our **Gam's Protein Vegan Bars** are a true celebration of taste and plant-powered nutrition, crafted with 100% **plant-based ingredients** that respect your health, animals, and the environment. Each bar blends a soft, satisfying texture with carefully selected natural components to create a delicious, guilt-free snack for any occasion.

Made from a **balanced combination of rice and soy protein**, these bars deliver complete essential amino acids to fuel your active lifestyle. **Rich in fibre** from dates, cranberries, and almonds, they help keep you satisfied while supporting **healthy digestion**. Every bar is gluten-free, made without palm oil, and **coated in a vegan protein layer** for an irresistible finish. Just pick your favourite and enjoy clean energy any time of day.

gluten FREE | 100% PLANT PROTEIN | HIGH fibre | palm-oil FREE



**RICE & SOY PROTEIN**  
Complete plant proteins for strength, energy, and recovery.



**DRIED FRUITS & NUTS**  
Natural sweetness, fibre, and a satisfying texture.



**VEGAN PROTEIN COATING**  
Delicious chocolate taste with no animal ingredients.

Healthy lifestyle  
*Gam's*  
PROTEIN



## BLACKCURRANT



### NUTRITIONAL VALUES PER 100 g

Energy:..... 1 534 kJ/367 kcal  
 Fat:..... 15 g  
 of which saturates:..... 9,4 g  
 Carbohydrate:..... 35 g  
 of which sugars:..... 23 g  
 of which polyols:..... 7,9 g  
 Fibre: ..... 17 g  
 Protein:..... 19 g  
 Salt:..... 0,75 g

#### Ingredients:

Date paste, dark coating with maltitol 20% [sweetener (maltitols), completely hydrogenated rapeseed and coconut oil, cocoa powder, emulsifier (lecithins), flavouring], mixture of proteins 19% (rice protein, **soya** protein), chicory root fibre, sweetened dried cranberries (cranberries, sugar, sunflower oil), crushed **almonds**, pieces of lyophilized blackcurrants 4%, cocoa butter, flavouring, antioxidant (tocopherol-rich extract), salt. May contain **milk**, **peanuts** and other **nuts**.

EAN/pcs: 8585067200867

## SALTED CARAMEL



### NUTRITIONAL VALUES PER 100 g

Energy:..... 1 531 kJ/366 kcal  
 Fat:..... 14 g  
 of which saturates:..... 9,6 g  
 Carbohydrate:..... 31 g  
 of which sugars:..... 19 g  
 of which polyols:..... 7,9 g  
 Fibre: ..... 17 g  
 Protein:..... 23 g  
 Salt:..... 1,0 g

#### Ingredients:

Date paste, mixture of proteins 21% (rice protein, **soya** protein), dark coating with maltitol 20% [sweetener (maltitols), completely hydrogenated rapeseed and coconut oil, cocoa powder, emulsifier (lecithins), flavouring], chicory root fibre, **peanut** butter 5,2%, **soya** protein extrudates 3,9% (**soya** protein, tapioca starch, salt), cocoa butter, flavouring, salt 0,1%, antioxidant (tocopherol-rich extract). May contain **milk** and **nuts**.

EAN/pcs: 8585067200874

Weight	Shelf life	Pcs. in box
40 g	365	30

# GAM'S PROTEIN NUTS BARS

Our **Gam's Protein Nuts Bars** are a true celebration of taste, combining the richness of premium nuts with the power of plant protein in every satisfying bite. Each bar blends a delicious mix of **cashews, peanuts, almonds, pistachios, and real dried fruits**, delivering a perfect harmony of flavours and nutrients. Finished with a smooth protein coating, they create a soft, indulgent texture that makes every moment feel like a wholesome treat.

Every bar is **gluten-free**, crafted without palm oil, and packed with **soy protein** to help fuel your active lifestyle. With up to **19% protein**, they're an ideal choice for natural energy and lasting satisfaction. Just pick your favourite and enjoy real, nutty goodness any time of day.

gluten FREE | REAL fruit | PEANUTS | CASHEWS | ALMONDS | PISTACHIO | palm-oil FREE



#### NUT BLEND

Cashews, peanuts, almonds, pistachios for energy and taste.



#### DRIED FRUITS

Natural sweetness, fibre, and antioxidant benefits in every bite.



#### PROTEIN COATING

Smooth finish that adds protein and delicious flavour.

Healthy lifestyle  
*Gam's*  
PROTEIN



## 4 NUTS



### NUTRITIONAL VALUES PER 100 g

Energy:.....2 246 kJ/537 kcal  
 Fat:..... 38 g  
 of which saturates:.....7,9 g  
 Carbohydrate:..... 28 g  
 of which sugars:..... 13 g  
 Fibre:.....8,0 g  
 Protein:..... 19 g  
 Salt:..... 0,08 g

#### Ingredients:

Roasted **peanuts** 45%, glucose syrup, **almonds** 13%, dark coating with maltitol and protein 10% [sweetener (maltitols), completely hydrogenated rapeseed and coconut oil, cocoa powder, **milk** protein concentrate 10%, emulsifier (lecithins), flavouring], glucose-fructose syrup, **pistachio nuts** 5,8%, pieces of **cashews** 3,6%, **soya** protein extrudates 1,7% (soya protein, tapioca starch, salt), rapeseed oil, emulsifier (lecithins), salt. May contain other **nuts**. May contain small pieces of pits and shells.

EAN/pcs: 8585067200829

## SALTED CARAMEL



### NUTRITIONAL VALUES PER 100 g

Energy:..... 2 209 kJ/528 kcal  
 Fat:..... 36 g  
 of which saturates:.....7,5 g  
 Carbohydrate:..... 32 g  
 of which sugars:..... 16 g  
 Fibre:.....7,2 g  
 Protein:..... 18 g  
 Salt:.....0,72 g

#### Ingredients:

Salted roasted **peanuts** 45% (**peanuts**, sunflower oil, salt), glucose syrup, dark coating with maltitol and protein 10% [sweetener (maltitols), completely hydrogenated rapeseed and coconut oil, cocoa powder, **milk** protein concentrate 10%, emulsifier (lecithins), flavouring], pieces of **cashews** 8,8%, roasted peanuts 8,8%, glucose-fructose syrup, caramel pieces 5,6% (sugar, glucose syrup, salt), **soya** protein extrudates 1,8% (**soya** protein, tapioca starch, salt), rapeseed oil, emulsifier (lecithins), salt 0,04%. May contain other **nuts**. May contain small pieces of pits and shells.

EAN/pcs: 8585067200843

## BERRIES



### NUTRITIONAL VALUES PER 100 g

Energy:.....2 134 kJ/510 kcal  
 Fat:..... 33 g  
 of which saturates:.....7,6 g  
 Carbohydrate:..... 34 g  
 of which sugars:..... 20 g  
 Fibre:.....7,7 g  
 Protein:..... 17 g  
 Salt:.....0,11 g

#### Ingredients:

Roasted **peanuts** 53%, glucose syrup, dark coating with maltitol and protein 10% [sweetener (maltitols), completely hydrogenated rapeseed and coconut oil, cocoa powder, **milk** protein concentrate 10%, emulsifier (lecithins), flavouring], sweetened dried cranberries 9,6% (cranberries 60%, sugar, sunflower oil), glucose-fructose syrup, pieces of **cashews** 5,4%, rapeseed oil, **soya** protein extrudates 1,4% (**soya** protein, tapioca starch, salt), lyophilized blackcurrants 0,7%, pieces of lyophilized raspberries 0,5%, emulsifier (lecithins), salt. May contain other **nuts**. May contain small pieces of pits and shells.

EAN/pcs: 8585067200836

## APPLE PIE



### NUTRITIONAL VALUES PER 100 g

Energy:..... 2 002 kJ/479 kcal  
 Fat:..... 27 g  
 of which saturates:..... 5,9 g  
 Carbohydrate:..... 43 g  
 of which sugars:..... 24 g  
 Fibre:.....4,3 g  
 Protein:..... 15 g  
 Salt:..... 0,30 g

#### Ingredients:

Pieces of **walnuts** 25%, glucose syrup, milk coating with maltitol and protein 10% [sweetener (maltitols), completely hydrogenated rapeseed and coconut oil, **milk** protein concentrate 10%, skimmed **milk** powder, cocoa powder, emulsifier (lecithins), flavouring], dried raisins 9,4% (raisins 99%, sunflower oil), **soya** protein extrudates (**soya** protein, tapioca starch, salt), pieces of roasted **peanuts** 9%, glucose-fructose syrup, pieces of dried apples 8,4% [apples 99,3%, antioxidant (citric acid)], rapeseed oil, ground cinnamon 0,8%, emulsifier (lecithins), salt. May contain other **nuts**. May contain small pieces of pits and shells.

EAN/pcs: 8585067200850

Weight	Shelf life	Pcs. in box
40 g	365	30

# GAM'S PROTEIN CEREAL BARS

Our **Gam's Protein Cereal Bars** are a true celebration of taste, bringing together **gluten-free cereals**, rich protein content, and a deliciously soft texture in every bite. Carefully crafted with a blend of six **nutrient-rich grains**, each bar delivers wholesome energy and essential nutrients to fuel your active lifestyle.

Packed with up to **25% protein**, they combine **soy crispies**, **collagen**, and **Milk Protein Concentrate** to support muscle recovery and lasting satiety. Whether you crave the sweetness of **Strawberry**, the smoothness of **Chocolate**, or the tropical notes of **Coconut**, every bar is finished with a tasty protein coating for a satisfying snack any time of day. Just pick your favourite and enjoy balanced nutrition without compromise.

gluten FREE | AMARANTH | QUINOA | OATS | BUCKWHEAT | MILLET | COLLAGEN



#### GLUTEN-FREE CEREALS

Six grains for energy, fibre, and lasting satisfaction.



#### PROTEIN BLEND

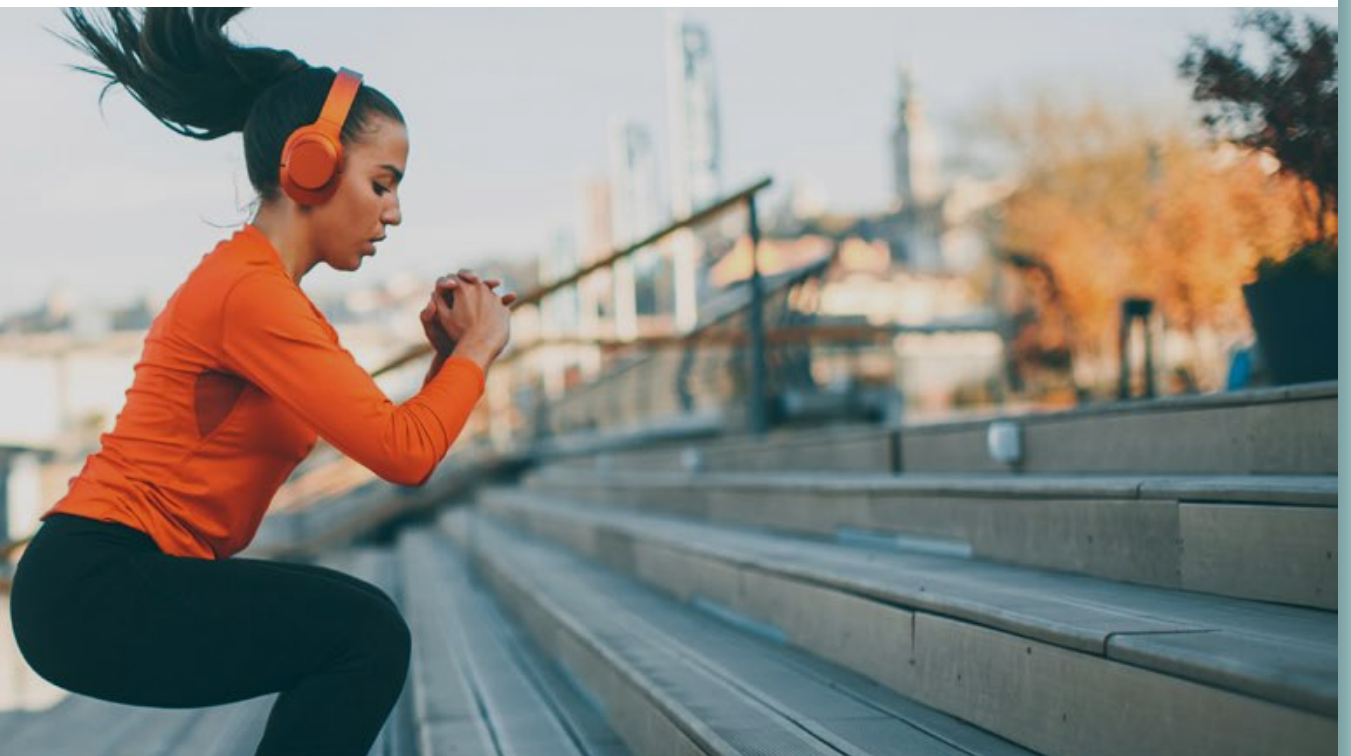
Soy, collagen, and MPC for 25% protein and recovery.



#### FLAVOUR SELECTION

Coconut, chocolate, strawberry to delight every taste.

Healthy lifestyle  
*Gam's*  
PROTEIN



## COCONUT



### NUTRITIONAL VALUES PER 100 g

Energy:.....1 694 kJ/405 kcal  
 Fat: ..... 13 g  
 of which saturates:..... 10 g  
 Carbohydrate:..... 49 g  
 of which sugars:..... 17 g  
 Fibre: .....2,1 g  
 Protein:..... 25 g  
 Salt: .....0,59 g

#### Ingredients:

Dark coating with maltitol and protein 24% [sweetener (maltitols), completely hydrogenated rapeseed and coconut oil, cocoa powder, **milk** protein concentrate 10%, emulsifier (lecithins), flavouring], glucose syrup, **soya** protein extrudates 20% (**soya** protein, tapioca starch, salt), glucose-fructose syrup, hydrolyzed collagen peptides 4,5%, rapeseed oil, grated coconut 2,7%, **milk** protein concentrate 1,8%, puffed buckwheat 1,8%, puffed millet 1,8%, puffed oats 1,8%, puffed quinoa 1,8%, puffed amaranth 1,8%, flavouring, emulsifier (lecithins), salt. May contain **peanuts** and **nuts**.

EAN/pcs: 8585067201420

## STRAWBERRY



### NUTRITIONAL VALUES PER 100 g

Energy:.....1 732 kJ/414 kcal  
 Fat: ..... 12 g  
 of which saturates:..... 8,2 g  
 Carbohydrate:..... 52 g  
 of which sugars:..... 20 g  
 Fibre: .....1,9 g  
 Protein:..... 25 g  
 Salt: .....0,75 g

#### Ingredients:

White coating with maltitol and protein 24% [sweetener (maltitols), completely hydrogenated rapeseed and coconut oil, sweet **whey**, skimmed **milk** powder, **milk** protein concentrate 10%, emulsifier (lecithins), flavouring], glucose syrup, **soya** protein extrudates 20% (**soya** protein, tapioca starch, salt), glucose-fructose syrup, hydrolyzed collagen peptides 4,5%, rapeseed oil, pieces of lyophilized strawberries 2,7%, **milk** protein concentrate 1,8%, puffed buckwheat 1,8%, puffed millet 1,8%, puffed oats 1,8%, puffed quinoa 1,8%, puffed amaranth 1,8%, flavouring, emulsifier (lecithins), salt. May contain **peanuts** and **nuts**.

EAN/pcs: 8585067201444

## CHOCOLATE



### NUTRITIONAL VALUES PER 100 g

Energy:..... 1 720 kJ/411 kcal  
 Fat: ..... 13 g  
 of which saturates:..... 9,0 g  
 Carbohydrate:..... 49 g  
 of which sugars:..... 16 g  
 Fibre: .....2,4 g  
 Protein:..... 25 g  
 Salt: .....0,72 g

#### Ingredients:

Milk coating with maltitol and protein 24% [sweetener (maltitols), completely hydrogenated rapeseed and coconut oil, **milk** protein concentrate 10%, skimmed **milk** powder, cocoa powder, emulsifier (lecithins), flavouring], glucose syrup, **soya** protein extrudates 20% (**soya** protein, tapioca starch, salt), glucose-fructose syrup, hydrolyzed collagen peptides 4,5%, rapeseed oil, fat reduced cocoa powder 2,7% [fat reduced cocoa powder, acidity regulator (potassium carbonates)], **milk** protein concentrate 1,8%, puffed buckwheat 1,8%, puffed millet 1,8%, puffed oats 1,8%, puffed quinoa 1,8%, puffed amaranth 1,8%, flavouring, emulsifier (lecithins), salt. May contain **peanuts** and **nuts**.

EAN/pcs: 8585067201437

Weight	Shelf life	Pcs. in box
29 g	365	28

# GAM'S PROTEIN DUBAI CHOCOLATE

Our **Gam's Protein Dubai Chocolate** is a true celebration of taste, merging **Middle Eastern indulgence** with modern functional nutrition in every unique bite. Crafted in **Dubai**, this innovative chocolate blends **authentic kadayif, premium pistachios, and real chocolate**, delivering an unforgettable flavour and texture that sets it apart from ordinary protein snacks.

With **15 g of protein per 100 g**, it supports your goals without compromising on pleasure. Every piece is **free from added sugar** and rich in fibre, making it the perfect choice for health-conscious consumers who value taste and balanced nutrition. Whether as an energising treat or a guilt-free dessert, it's designed to elevate your snacking experience to new heights. Just break off a piece and **enjoy modern indulgence** inspired by tradition.

**KADAYIF with PISTACHIO | 15 g PROTEIN | NO SUGAR added | produced in DUBAI**



#### **KADAYIF**

Middle Eastern crispy strands for unique texture and exotic taste.



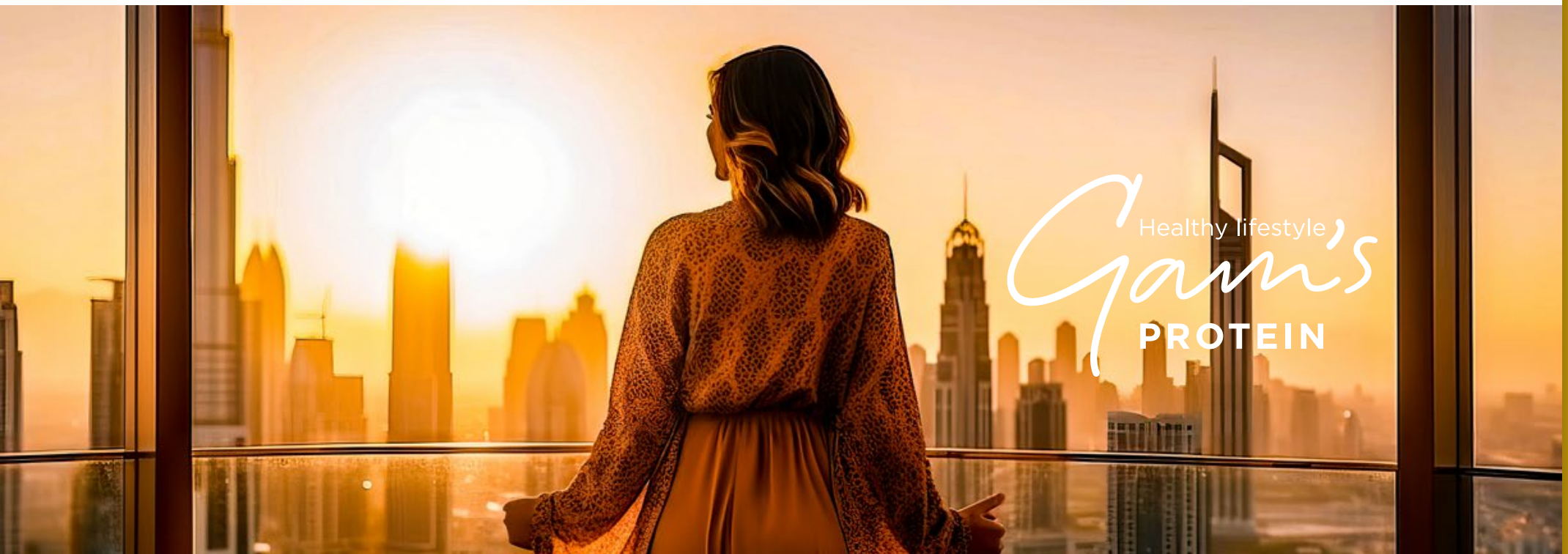
#### **PISTACHIOS**

Rich in healthy fats, fibre, and natural sweetness.



#### **MALTITOL**

Sweetness without added sugar for balanced energy.



Healthy lifestyle  
*Gam's*  
**PROTEIN**

## KADAYIF WITH PISTACHIO



### NUTRITIONAL VALUES PER 100 g

Energy:.....	2 144 kJ/513 kcal
Fat: .....	33 g
of which saturates:.....	16 g
Carbohydrate:.....	44 g
of which sugars:.....	15 g
of which polyols:.....	17 g
Fibre: .....	5,4 g
Protein:.....	15 g
Salt:.....	0,34 g

#### Ingredients:

Milk chocolate with maltitol 55% (sweetener (maltitols), cocoa butter, whole **milk** powder 26%, skimmed **milk** powder 1%, emulsifier (**soya** lecithin), vanillin flavour], **pistachio** filling 35% [natural **pistachio nuts** 80%, non hydrogenated vegetable oils (palm oil, **soya** oil, shea kernel oil)], kadayif 10% (**wheat** flour, corn starch, salt), colour (indigotine). May contain **peanuts** and other **nuts**.

EAN/pcs: 8585067202434

Weight	Shelf life	Pcs. in box
100 g	243	10

# GAM'S PROTEIN DUBAI CHOCOLATE STYLE BARS

Our **Gam's Protein Dubai Chocolate Style Bars** are a true celebration of taste, blending **Middle Eastern inspiration** with modern **functional nutrition** in every decadent bite. Each bar features a delicate layer of **crispy kadayif**, combined with **real chocolate** and premium ingredients to create a unique, unforgettable flavour experience. With **20% high-quality protein**, no added sugar, and a naturally satisfying texture, these bars are designed to fuel your body while delighting your senses. From the smooth richness of **Hazelnut** and the bold edge of **Peanut Butter** to the tropical combination of **Coconut and Pistachio**, the fruity freshness of **Strawberry**, and the indulgent **Salted Caramel**, every flavour offers a distinctive moment of pleasure. Just pick your favourite and enjoy a little luxury wherever you are.

**20% PROTEIN | KADAYIF | LOW SUGAR | REAL CHOCOLATE**



#### **MILK PROTEIN & COLLAGEN**

Complete proteins to support recovery and daily vitality.



#### **KADAYIF LAYER**

Traditional texture that elevates every bite into an experience.



#### **FLAVOUR SELECTION**

6 flavours blending tradition with modern indulgence.

Healthy lifestyle  
*Gam's*  
**PROTEIN**



## KADAYIF WITH PISTACHIO



### NUTRITIONAL VALUES PER 100 g

Energy:.....1 840 kJ/440 kcal  
 Fat:..... 27 g  
 of which saturates:..... 12 g  
 Carbohydrate:..... 38 g  
 of which sugars:..... 4,3 g  
 Fibre:..... 3,7 g  
 Protein:..... 20 g  
 Salt:..... 0,44 g

#### Ingredients:

Paste with kadayif and **pistachio nuts** 50% [kadayif dough 33% (water, **wheat** flour, **wheat** starch, corn starch, salt, emulsifier /soya lecithin/, sunflower oil, preservative /potassium sorbate/), paste with **pistachios** nuts 31% (100% **pistachios nuts**), white chocolate with sweetener (sweetener /maltitols/, cocoa butter, **milk** powder, emulsifier /soya lecithin/, natural vanilla flavour), sweetener (xylitol), coconut oil, tahini (**sesame** seeds), salt, antioxidant (extracts of rosemary /sunflower oil, extracts of rosemary/)), milk chocolate with maltitol 25% [sweetener (maltitols), cocoa butter, whole **milk** powder, cocoa mass, emulsifier (lecithins), flavouring], mixture of proteins 14% (hydrolyzed collagen peptides 5,1%, **milk** protein isolate, **milk** protein concentrate, whole **milk** powder), humectant (glycerol), sweetener (maltitols), rapeseed oil, water, fat reduced cocoa powder 1,1% [fat reduced cocoa powder, acidity regulator (potassium carbonates)], thickener (acacia gum), flavourings, emulsifier (mono- and diglycerides of fatty acids), antioxidant (tocopherol-rich extract), salt. May contain **peanuts** and other **nuts**.

EAN/pcs: 8585067202458

## KADAYIF WITH SALTED CARAMEL



### NUTRITIONAL VALUES PER 100 g

Energy:.....1 771 kJ/423 kcal  
 Fat:..... 27 g  
 of which saturates:..... 12 g  
 Carbohydrate:..... 33 g  
 of which sugars:..... 3,6 g  
 Fibre:..... 3,0 g  
 Protein:..... 20 g  
 Salt:..... 0,50 g

#### Ingredients:

Paste with kadayif and salted caramel flavour 50% [kadayif dough 33% (water, **wheat** flour, **wheat** starch, corn starch, salt, emulsifier /soya lecithin/, sunflower oil, preservative /potassium sorbate/), paste with **almonds** (100% **almonds**), white chocolate with sweetener (sweetener /maltitols/, cocoa butter, **milk** powder, emulsifier /soya lecithin/, natural vanilla flavour), sweetener (xylitol), coconut oil, tahini (**sesame** seeds), flavouring, salt 0,4%, antioxidant (extracts of rosemary /sunflower oil, extracts of rosemary/)), milk chocolate with maltitol 25% [sweetener (maltitols), cocoa mass, emulsifier (lecithins), flavouring], mixture of proteins 14% (hydrolyzed collagen peptides 4,9%, **milk** protein isolate, **milk** protein concentrate, whole **milk** powder), sweetener (maltitols), humectant (glycerol), rapeseed oil, water, colour (plain caramel), salt 0,07%, flavourings, thickener (acacia gum), emulsifier (mono- and diglycerides of fatty acids), antioxidant (tocopherol-rich extract). May contain **peanuts** and other **nuts**.

EAN/pcs: 8585067202533

## KADAYIF WITH PEANUT BUTTER



### NUTRITIONAL VALUES PER 100 g

Energy:.....1 804 kJ/431 kcal  
 Fat:..... 26 g  
 of which saturates:..... 12 g  
 Carbohydrate:..... 37 g  
 of which sugars:..... 4,2 g  
 Fibre:..... 2,7 g  
 Protein:..... 20 g  
 Salt:..... 0,53 g

#### Ingredients:

Paste with kadayif and peanut butter 50% [kadayif dough 33% (water, **wheat** flour, **wheat** starch, corn starch, salt, emulsifier /soya lecithin/, sunflower oil, preservative /potassium sorbate/), **peanut** butter 31%, milk chocolate with sweetener (sweetener /maltitols/, cocoa butter, **milk** powder, cocoa mass, emulsifier /soya lecithin/, natural vanilla flavour), sweetener (xylitol), coconut oil, tahini (**sesame** seeds), salt, antioxidant (extracts of rosemary /sunflower oil, extracts of rosemary/)), milk chocolate with maltitol 25% [sweetener (maltitols), cocoa butter, whole **milk** powder, cocoa mass, emulsifier (lecithins), flavouring], mixture of proteins 14% (hydrolyzed collagen peptides 4,9%, **milk** protein isolate, **milk** protein concentrate, whole **milk** powder), sweetener (maltitols), humectant (glycerol), rapeseed oil, water, flavourings, colour (plain caramel), thickener (acacia gum), emulsifier (mono- and diglycerides of fatty acids), antioxidant (tocopherol-rich extract), salt. May contain **nuts**.

EAN/pcs: 8585067202465

Weight	Shelf life	Pcs. in box
60 g	365	24

## KADAYIF WITH PISTACHIO & COCONUT



### NUTRITIONAL VALUES PER 100 g

Energy:.....1 795 kJ/429 kcal  
 Fat: ..... 27 g  
 of which saturates:..... 14 g  
 Carbohydrate:..... 35 g  
 of which sugars:..... 4,3 g  
 Fibre: ..... 3,4 g  
 Protein:..... 20 g  
 Salt:..... 0,44 g

#### Ingredients:

Paste with kadayif, **pistachio nuts** and grated coconut 50% [kadayif dough 33% (water, **wheat** flour, **wheat** starch, corn starch, salt, emulsifier /**soya** lecithin/, sunflower oil, preservative /potassium sorbate/), paste with **pistachio nuts** 21% (100% **pistachio nuts**), white chocolate with sweetener (sweetener / maltitols/, cocoa butter, **milk** powder, emulsifier /soya lecithin/, natural vanilla flavour), grated coconut 10%, sweetener (xylitol), coconut oil, tahini (**sesame** seeds), salt, antioxidant (extracts of rosemary /sunflower oil, extracts of rosemary/)], milk chocolate with maltitol 25% [sweetener (maltitols), cocoa butter, whole **milk** powder, cocoa mass, emulsifier (lecithins), flavouring], mixture of proteins 14% (hydrolyzed collagen peptides 4,8%, **milk** protein isolate, **milk** protein concentrate, whole **milk** powder), humectant (glycerol), sweetener (maltitols), rapeseed oil, grated coconut 1,3%, water, thickener (acacia gum), flavourings, emulsifier (mono- and diglycerides of fatty acids), antioxidant (tocopherol-rich extract), salt. May contain **peanuts** and other **nuts**.

EAN/pcs: 8585067202571

## KADAYIF WITH STRAWBERRY



### NUTRITIONAL VALUES PER 100 g

Energy:.....1 812 kJ/433 kcal  
 Fat: ..... 28 g  
 of which saturates:..... 13 g  
 Carbohydrate:..... 35 g  
 of which sugars:..... 4,3 g  
 Fibre: ..... 3,3 g  
 Protein:..... 20 g  
 Salt:..... 0,37 g

#### Ingredients:

Paste with kadayif and strawberries 50% [kadayif dough 33% (water, **wheat** flour, **wheat** starch, corn starch, salt, emulsifier /**soya** lecithin/, sunflower oil, preservative /potassium sorbate/), paste with **almonds** (100% **almonds**), white chocolate with sweetener (sweetener /maltitols/, cocoa butter, **milk** powder, emulsifier / **soya** lecithin/, natural vanilla flavour), sweetener (xylitol), coconut oil, tahini (**sesame** seeds), lyophilized strawberries 2%, salt, antioxidant (extracts of rosemary /sunflower oil, extracts of rosemary/)], milk chocolate with maltitol 25% [sweetener (maltitols), cocoa butter, whole **milk** powder, cocoa mass, emulsifier (lecithins), flavouring], mixture of proteins 13% (hydrolyzed collagen peptides 4,7%, **milk** protein isolate, **milk** protein concentrate, whole **milk** powder), sweetener (maltitols), humectant (glycerol), rapeseed oil, water, grated coconut, pieces of lyophilized strawberries 0,4%, acidity regulator (lactic acid), flavourings, thickener (acacia gum), colour (carmine), emulsifier (mono- and diglycerides of fatty acids), antioxidant (tocopherol-rich extract), salt. May contain **peanuts** and other **nuts**.

EAN/pcs: 8585067202519

## KADAYIF WITH HAZELNUTS



### NUTRITIONAL VALUES PER 100 g

Energy:..... 1 891 kJ/452 kcal  
 Fat: ..... 29 g  
 of which saturates:..... 12 g  
 Carbohydrate:..... 36 g  
 of which sugars:..... 3,7 g  
 Fibre: ..... 1,5 g  
 Protein:..... 20 g  
 Salt:..... 0,43 g

#### Ingredients:

Paste with kadayif and hazelnuts 50% [kadayif dough 33% (water, **wheat** flour, **wheat** starch, corn starch, salt, emulsifier /**soya** lecithin/, sunflower oil, preservative /potassium sorbate/), paste with **hazelnuts** 31% (100% **hazelnuts**), milk chocolate with sweetener (sweetener /maltitols/, cocoa butter, **milk** powder, cocoa mass, emulsifier /**soya** lecithin/, natural vanilla flavour), sweetener (xylitol), coconut oil, tahini (**sesame** seeds), salt, antioxidant (extracts of rosemary /sunflower oil, extracts of rosemary/)], milk chocolate with maltitol 25% [sweetener (maltitols), cocoa butter, whole **milk** powder, cocoa mass, emulsifier (lecithins), flavouring], mixture of proteins 15% (**milk** protein isolate, **milk** protein concentrate, hydrolyzed collagen peptides 4,6%, whole **milk** powder), humectant (glycerol), sweetener (maltitols), rapeseed oil, water, flavourings, thickener (acacia gum), emulsifier (mono- and diglycerides of fatty acids), antioxidant (tocopherol-rich extract), salt. May contain **peanuts** and other **nuts**.

EAN/pcs: 8585067202472

Weight	Shelf life	Pcs. in box
60 g	365	24

# GAM'S DUBAI CHOCOLATE STYLE PROTEIN SPREAD

Our **Gam's Dubai Chocolate Style Protein Spread** is a true celebration of taste, transforming a **Middle Eastern dessert sensation** into a modern functional indulgence. Crafted with **real chocolate**, authentic **kadayif**, and premium ingredients, this spread delivers a smooth yet **crunchy texture** and rich flavour that set it apart.

With up to **26% protein**, no added sugar, and a naturally satisfying consistency, it's the perfect way to elevate your daily rituals — whether enjoyed as a **topping, filling, or straight from the spoon**. Every spoonful blends **irresistible taste** with **balanced nutrition** for a **guilt-free treat** you can enjoy anytime. Just pick your favourite flavour and experience the next evolution of healthy indulgence.

**19-26% PROTEIN | KADAYIF | NO SUGAR ADDED | REAL CHOCOLATE**



**KADAYIF**  
Crispy strands for authentic texture and an exotic twist.



**MALTITOL**  
Sweetness without added sugar for balanced energy.



**FLAVOUR SELECTION**  
6 delicious options for an exotic and luxurious treat.



Healthy lifestyle  
*Gam's*  
PROTEIN

## KADAYIF AND PISTACHIO



### NUTRITIONAL VALUES PER 100 g

Energy:..... 2 291 kJ/551 kcal  
 Fat:..... 42 g  
 of which saturates:..... 15 g  
 Carbohydrate:..... 23 g  
 of which sugars:..... 5,4 g  
 Fibre: ..... 5,4 g  
 Protein:..... 24 g  
 Salt:.....0,59 g

#### Ingredients:

Paste with **pistachios nuts** 54% (100% **pistachio nuts**), white chocolate with sweetener 20% [sweetener (maltitols), cocoa butter, **milk** powder, emulsifier (**soya** lecithin), natural vanilla flavour], **milk** protein isolate 10%, kadayif dough 8,3% [water, **wheat** flour, **wheat** starch, corn starch, salt, emulsifier (**soya** lecithin), sunflower oil, preservative (potassium sorbate)], MCT fat (medium-chain triglycerides), coconut oil, tahini (**sesame** seeds), salt. May contain **peanuts** and other **nuts**.

EAN/pcs: 8585067202557

## KADAYIF AND SALTED CARAMEL



### NUTRITIONAL VALUES PER 100 g

Energy:.....2 276 kJ/547 kcal  
 Fat:..... 45 g  
 of which saturates:..... 17 g  
 Carbohydrate:..... 15 g  
 of which sugars:..... 2,9 g  
 Fibre: ..... 6,3 g  
 Protein:..... 21 g  
 Salt: .....0,55 g

#### Ingredients:

Paste with **almonds** (100% **almonds**), white chocolate with sweetener 20% [sweetener (maltitols), cocoa butter, **milk** powder, emulsifier (**soya** lecithin), natural vanilla flavour], **milk** protein isolate 10%, kadayif dough 8,3% [water, **wheat** flour, **wheat** starch, corn starch, salt, emulsifier (**soya** lecithin), sunflower oil, preservative (potassium sorbate)], MCT fat (medium-chain triglycerides), flavouring, coconut oil, tahini (**sesame** seeds), colour (sulphite ammonia caramel), salt 0,4%. May contain **peanuts** and other **nuts**.

EAN/pcs: 8585067202632

## KADAYIF AND PEANUT BUTTER



### NUTRITIONAL VALUES PER 100 g

Energy:..... 2 312 kJ/556 kcal  
 Fat: ..... 42 g  
 of which saturates:..... 15 g  
 Carbohydrate:..... 23 g  
 of which sugars:..... 5,2 g  
 Fibre: ..... 5,4 g  
 Protein:..... 26 g  
 Salt:.....0,55 g

#### Ingredients:

**Peanut** butter 54%, milk chocolate with sweetener 20% [sweetener (maltitols), cocoa butter, **milk** powder, cocoa mass, emulsifier (**soya** lecithin), natural vanilla flavour], **milk** protein isolate 10%, kadayif dough 8,3% [water, **wheat** flour, **wheat** starch, corn starch, salt, emulsifier (**soya** lecithin), sunflower oil, preservative (potassium sorbate)], MCT fat (medium-chain triglycerides), coconut oil, tahini (**sesame** seeds), salt. May contain **nuts**.

EAN/pcs: 8585067202595

Weight	Shelf life	Pcs. in box
135 g	365	6

## KADAYIF AND PISTACHIO-COCONUT



### NUTRITIONAL VALUES PER 100 g

Energy:..... 2 250 kJ/541 kcal  
 Fat:..... 41 g  
 of which saturates:..... 16 g  
 Carbohydrate:..... 23 g  
 of which sugars:..... 5,2 g  
 Fibre:..... 5,5 g  
 Protein:..... 23 g  
 Salt:..... 0,59 g

#### Ingredients:

Paste with **pistachios nuts** 47% (100% **pistachio nuts**), white chocolate with sweetener 20% [sweetener (maltitols), cocoa butter, **milk** powder, emulsifier (**soya** lecithin), natural vanilla flavour], **milk** protein isolate 10%, kadayif dough 8,3% [water, **wheat** flour, **wheat** starch, corn starch, salt, emulsifier (**soya** lecithin), sunflower oil, preservative (potassium sorbate)], grated coconut 7%, MCT fat (medium-chain triglycerides), coconut oil, tahini (**sesame** seeds), salt. May contain **peanuts** and other **nuts**.

EAN/pcs: 8585067202670

## KADAYIF AND STRAWBERRY



### NUTRITIONAL VALUES PER 100 g

Energy:..... 2 303 kJ/554 kcal  
 Fat:..... 45 g  
 of which saturates:..... 17 g  
 Carbohydrate:..... 16 g  
 of which sugars:..... 4,0 g  
 Fibre:..... 6,5 g  
 Protein:..... 21 g  
 Salt:..... 0,55 g

#### Ingredients:

Paste with **almonds** (100% **almonds**), white chocolate with sweetener 20% [sweetener (maltitols), cocoa butter, **milk** powder, emulsifier (**soya** lecithin), natural vanilla flavour], **milk** protein isolate 10%, kadayif dough 8,3% [water, **wheat** flour, **wheat** starch, corn starch, salt, emulsifier (**soya** lecithin), sunflower oil, preservative (potassium sorbate)], MCT fat (medium-chain triglycerides), lyophilized strawberries 2%, coconut oil, tahini (**sesame** seeds), flavouring, salt. May contain **peanuts** and other **nuts**.

EAN/pcs: 8585067202656

## KADAYIF AND HAZELNUTS



### NUTRITIONAL VALUES PER 100 g

Energy:..... 2 496 kJ/600 kcal  
 Fat:..... 51 g  
 of which saturates:..... 14 g  
 Carbohydrate:..... 19 g  
 of which sugars:..... 3,2 g  
 Fibre:..... 6,4 g  
 Protein:..... 19 g  
 Salt:..... 0,55 g

#### Ingredients:

Paste with **hazelnuts** 53% (100% **hazelnuts**), milk chocolate with sweetener 20% [sweetener (maltitols), cocoa butter, **milk** powder, cocoa mass, emulsifier (**soya** lecithin), natural vanilla flavour], **milk** protein isolate 10%, kadayif dough 8,3% [water, **wheat** flour, **wheat** starch, corn starch, salt, emulsifier (**soya** lecithin), sunflower oil, preservative (potassium sorbate)], MCT fat (medium-chain triglycerides), coconut oil, tahini (**sesame** seeds), colour (sulphite ammonia caramel), salt. May contain **peanuts** and other **nuts**.

EAN/pcs: 8585067202618

Weight	Shelf life	Pcs. in box
135 g	365	6

# GAM'S PROTEIN BONDS

Our **Gam's Protein Bonds** are a true celebration of taste, blending **luxurious flavours** with the power of functional nutrition in every delicate bite. Each bonbon is crafted with a **rich protein coating** that envelops a deliciously soft centre, offering a moment of indulgence without compromise.

With up to **28% protein**, these exquisite treats combine **Milk Protein Concentrate** and **Hydrolyzed Collagen** to nourish your body while delighting your senses. From the tropical allure of **Coconut** and the smooth warmth of **Vanilla** to the bold tang of **Blackcurrant**, every flavour is designed to satisfy your cravings and support an active lifestyle. Just pick your favourite and enjoy a new standard of healthy indulgence.

**NO added sugars | gluten FREE | palm-oil FREE | soy FREE**



**MILK PROTEIN CONCENTRATE (MPC)**  
Complete proteins to support muscle growth and lasting energy.



**HYDROLYZED COLLAGEN**  
Promotes skin elasticity, joint health, and smooth texture.



**FLAVOUR SELECTION**  
Coconut, vanilla, and blackcurrant for a unique indulgent experience.

Healthy lifestyle  
*Gam's*  
PROTEIN



## BLACKCURRANT



### NUTRITIONAL VALUES PER 100 g

Energy:.....1 785 kJ/427 kcal  
 Fat:..... 22 g  
 of which saturates:..... 17 g  
 Carbohydrate:..... 36 g  
 of which sugars:..... 7,3 g  
 of which polyols:..... 21 g  
 Fibre:..... 1,9 g  
 Protein:..... 28 g  
 Salt:..... 0,49 g

#### Ingredients:

White coating with maltitol and protein 50% [sweetener (maltitols), completely hydrogenated rapeseed and coconut oil, sweet **whey**, skimmed **milk** powder, **milk** protein concentrate, emulsifier (lecithins), flavouring]. Protein mass 49% [mixture of proteins 27% (**milk** protein concentrate, hydrolyzed collagen peptides, whole **milk** powder), humectant (glycerol), sweetener (maltitols), rapeseed oil, water, pieces of lyophilized blackcurrants 2%, acidity regulator (lactic acid), flavourings, thickener (acacia gum), emulsifier (mono- and diglycerides of fatty acids), antioxidant (tocopherol-rich extract), colouring concentrate from hibiscus and carrot [concentrate from hibiscus and carrot, water, antioxidant (citric acid)], salt]. Glazing agent 1% (carnauba wax, beeswax, shellac). May contain **peanuts, soya and nuts**.

EAN/pcs: 8585067201277

## VANILLA



### NUTRITIONAL VALUES PER 100 g

Energy:.....1 752 kJ/419 kcal  
 Fat:..... 23 g  
 of which saturates:..... 18 g  
 Carbohydrate:..... 35 g  
 of which sugars:..... 2,5 g  
 of which polyols:..... 27 g  
 Fibre:..... 1,8 g  
 Protein:..... 28 g  
 Salt:..... 0,28 g

#### Ingredients:

Milk coating with maltitol and protein 50% [sweetener (maltitols), completely hydrogenated rapeseed and coconut oil, **milk** protein concentrate, skimmed **milk** powder, cocoa powder, emulsifier (lecithins), flavouring]. Protein mass 49% [mixture of proteins 28% (**milk** protein concentrate, hydrolyzed collagen peptides, whole **milk** powder), humectant (glycerol), sweetener (maltitols), rapeseed oil, water, flavourings, thickener (acacia gum), emulsifier (mono- and diglycerides of fatty acids), antioxidant (tocopherol-rich extract), colour (curcumin), salt]. Glazing agent 1% (carnauba wax, beeswax, shellac). May contain **peanuts, soya and nuts**.

EAN/pcs: 8585067201260

## COCONUT



### NUTRITIONAL VALUES PER 100 g

Energy:.....1 822 kJ/435 kcal  
 Fat:..... 25 g  
 of which saturates:..... 20 g  
 Carbohydrate:..... 34 g  
 of which sugars:..... 2,2 g  
 of which polyols:..... 22 g  
 Fibre:..... 2,4 g  
 Protein:..... 27 g  
 Salt:..... 0,28 g

#### Ingredients:

Dark coating with maltitol and protein 50% [sweetener (maltitols), completely hydrogenated rapeseed and coconut oil, cocoa powder, **milk** protein concentrate, emulsifier (lecithins), flavouring]. Protein mass 49% [mixture of proteins 26% (**milk** protein concentrate, hydrolyzed collagen peptides, whole **milk** powder), sweetener (maltitols), humectant (glycerol), rapeseed oil, grated coconut 2,5%, water, thickener (acacia gum), flavourings, emulsifier (mono- and diglycerides of fatty acids), antioxidant (tocopherol-rich extract), salt]. Glazing agent 1% (carnauba wax, beeswax, shellac). May contain **peanuts, soya and nuts**.

EAN/pcs: 8585067201253

Weight	Shelf life	Pcs. in box
70 g	365	10

## BANANA



### NUTRITIONAL VALUES PER 100 g

Energy:..... 1 781 kJ/426 kcal  
 Fat:..... 23 g  
 of which saturates:..... 18 g  
 Carbohydrate:..... 35 g  
 of which sugars:..... 3,7 g  
 of which polyols:..... 22 g  
 Fibre:..... 2,2 g  
 Protein:..... 28 g  
 Salt:..... 0,29 g

#### Ingredients:

Dark coating with maltitol and protein 50% [sweetener (maltitols), completely hydrogenated rapeseed and coconut oil, cocoa powder, **milk** protein concentrate 10%, emulsifier (lecithins), flavouring]. Protein mass 49% [mixture of proteins 27% (**milk** protein concentrate, hydrolyzed collagen peptides 9,6%, whole **milk** powder), humectant (glycerol), sweetener (maltitols), rapeseed oil, powder from lyophilized bananas 2,5%, water, flavourings, thickener (acacia gum), emulsifier (mono- and diglycerides of fatty acids), antioxidant (tocopherol-rich extract), colour (curcumin), salt]. Glazing agent 1% (carnauba wax, beeswax, shellac). May contain **peanuts, soya** and **nuts**.

EAN/pcs: 8585067203134

## RASPBERRY



### NUTRITIONAL VALUES PER 100 g

Energy:..... 1 791 kJ/428 kcal  
 Fat:..... 22 g  
 of which saturates:..... 18 g  
 Carbohydrate:..... 38 g  
 of which sugars:..... 6,8 g  
 of which polyols:..... 23 g  
 Fibre:..... 1,9 g  
 Protein:..... 27 g  
 Salt:..... 0,48 g

#### Ingredients:

White coating with maltitol and protein 50% [sweetener (maltitols), completely hydrogenated rapeseed and coconut oil, sweet **whey**, skimmed **milk** powder, **milk** protein concentrate 10%, emulsifier (lecithins), flavouring]. Protein mass 49% [mixture of proteins 26% (**milk** protein concentrate, hydrolyzed collagen peptides 9,2%, whole milk powder), sweetener (maltitols), humectant (glycerol), rapeseed oil, water, grated coconut, pieces of lyophilized raspberries 0,9%, acidity regulator (lactic acid), flavourings, thickener (acacia gum), emulsifier (mono- and diglycerides of fatty acids), antioxidant (tocopherol-rich extract), salt]. Glazing agent 1% (carnauba wax, beeswax, shellac). May contain **peanuts, soya** and **nuts**.

EAN/pcs: 8585067203172

## SALTED CARAMEL



### NUTRITIONAL VALUES PER 100 g

Energy:..... 1 745 kJ/417 kcal  
 Fat:..... 23 g  
 of which saturates:..... 18 g  
 Carbohydrate:..... 35 g  
 of which sugars:..... 2,4 g  
 of which polyols:..... 28 g  
 Fibre:..... 1,8 g  
 Protein:..... 28 g  
 Salt:..... 0,42 g

#### Ingredients:

Milk coating with maltitol and protein 50% [sweetener (maltitols), completely hydrogenated rapeseed and coconut oil, **milk** protein concentrate 10%, skimmed **milk** powder, cocoa powder, emulsifier (lecithins), flavouring]. Protein mass 49% [mixture of proteins 28% (**milk** protein concentrate, hydrolyzed collagen peptides 9,3%, whole **milk** powder), sweetener (maltitols), humectant (glycerol), rapeseed oil, water, colour (plain caramel), salt 0,1%, flavourings, thickener (acacia gum), emulsifier (mono- and diglycerides of fatty acids), antioxidant (tocopherol-rich extract)]. Glazing agent 1% (carnauba wax, beeswax, shellac). May contain **peanuts, soya** and **nuts**.

EAN/pcs: 8585067203158

Weight	Shelf life	Pcs. in box
70 g	365	10

# GAM'S PROTEIN WAFERS

Our **Gam's Protein Wafers** are a true celebration of taste, combining **light, crispy layers** with delicious cream fillings and powerful nutrition in every bite. Crafted with an original recipe and premium ingredients, these wafers deliver a **satisfying crunch** and **smooth texture** while **supporting an active lifestyle**.

With up to **29% protein**, they blend a high-quality **protein mix**, plant-based fibres, and no added sugar, making them the perfect guilt-free snack for work, post-workout recovery, or anytime you crave a smarter indulgence. Choose from **Vanilla-Cream & Dark Chocolate**, **Lemon-Cream & Almond**, or **Nut-Cream & Hazelnut** — three irresistible flavours that redefine what functional snacking can be. Just pick your favourite and enjoy.

**25-29% PROTEIN** | **gluten FREE** | **HIGH fibre** | **NO SUGAR ADDED**



**PROTEIN BLEND**  
Dairy and plant proteins for complete amino acids and lasting fullness.



**CHOCOLATE COATING**  
Real cocoa taste without added sugar for balanced indulgence.



**FLAVOUR SELECTION**  
Vanilla, lemon, and nut combinations for every mood and moment.



Healthy lifestyle  
*Gam's*  
**PROTEIN**

## NUT-CREAM & HAZELNUTS



### NUTRITIONAL VALUES PER 100 g

Energy:.....2 450 kJ/589 kcal  
 Fat:..... 42 g  
 of which saturates:..... 22 g  
 Carbohydrate:..... 29 g  
 of which sugars:..... 3,7 g  
 of which polyols:..... 7,5 g  
 Fibre:..... 3,1 g  
 Protein:..... 25 g  
 Salt:.....0,22 g

#### Ingredients:

Mixture of proteins 28% (**milk** protein concentrate, **whey** protein concentrate), vegetable oils (rapeseed oil, completely hydrogenated rapeseed and coconut oil, shea kernel oil), milk coating with maltitol 21% [sweetener (maltitols 45,6%, sucralose), vegetable oils (completely hydrogenated coconut and rapeseed oil, shea kernel oil), skimmed **milk** powder 14%, defatted cocoa powder, cocoa butter, cocoa mass, emulsifier (lecithins), flavourings], roasted **hazelnuts** 6%, corn starch, potato starch, chicory root fibre, **hazelnut** paste 1,6%, defatted cocoa powder, corn flour, amaranth flour, flavourings, thickener (guar gum), raising agent (sodium carbonates, ammonium carbonates), sweetener (sucralose), emulsifier (lecithins), roasted **peanuts**. May contain **soya, eggs, sesame seeds** and other **nuts**.

EAN/pcs: 8585067202373

Weight	Shelf life	Pcs. in box
55 g	420	20

## VANILLA-CREAM



### NUTRITIONAL VALUES PER 100 g

Energy:.....2 280 kJ/549 kcal  
 Fat:..... 35 g  
 of which saturates:..... 18 g  
 Carbohydrate:..... 31 g  
 of which sugars:..... 15 g  
 Fibre:..... 4,2 g  
 Protein:..... 29 g  
 Salt:.....0,77 g

#### Ingredients:

Mixture of proteins 29% (**soya** protein isolate, **whey** protein concentrate), vegetable oils (rapeseed oil, completely hydrogenated rapeseed and coconut oil), cocoa coating 12% [sugar, vegetable oils (completely hydrogenated coconut and rapeseed oil, shea butter seed oil), fat reduced cocoa powder 15%, **whey** powder, emulsifier (lecithins), flavourings], corn starch, potato starch, sugar, **whey** powder, ground **soybeans**, corn flour, amaranth flour, thickener (guar gum), vanillin flavour, flavour, raising agent (sodium carbonates, ammonium carbonates), sweetener (sucralose), emulsifier (lecithins), roasted **peanuts**. May contain **eggs, sesame seeds** and **nuts**.

EAN/pcs: 8585067202410

Weight	Shelf life	Pcs. in box
50 g	420	20

## LEMON-CREAM & ALMONDS



### NUTRITIONAL VALUES PER 100 g

Energy:.....2 420 kJ/583 kcal  
 Fat:..... 42 g  
 of which saturates:..... 23 g  
 Carbohydrate:..... 29 g  
 of which sugars:..... 5,1 g  
 of which polyols:..... 8,3 g  
 Fibre:..... 3,5 g  
 Protein:..... 25 g  
 Salt:.....0,18 g

#### Ingredients:

Mixture of proteins 28% (**milk** protein concentrate, **whey** protein concentrate), vegetable oils (rapeseed oil, completely hydrogenated rapeseed and coconut oil, shea kernel oil), milk coating with maltitol 21% [sweetener (maltitols 45,6%, sucralose), vegetable oils (completely hydrogenated coconut and rapeseed oil, shea kernel oil), skimmed **milk** powder 14%, defatted cocoa powder, cocoa butter, cocoa mass, emulsifier (lecithins), flavourings], roasted **almonds** 6%, corn starch, potato starch, chicory root fibre, **whey** powder, corn flour, amaranth flour, natural lemon flavour, acidity regulator (citric acid), flavourings, thickener (guar gum), raising agent (sodium carbonates, ammonium carbonates), sweetener (sucralose), emulsifier (lecithins), roasted **peanuts**. May contain **soya, eggs, sesame seeds** and other **nuts**.

EAN/pcs: 8585067202397

Weight	Shelf life	Pcs. in box
55 g	420	20

# GAM'S PROTEIN FRUITS

Our **Gam's Protein Fruits** are a true celebration of taste, bringing you the vibrant sweetness of **real lyophilized fruit** wrapped in a smooth protein coating. Each piece combines the authentic flavour of **strawberries, raspberries, and bananas** with a satisfying texture that elevates your snacking experience.

Crafted with **no added sugar**, these wholesome treats deliver essential nutrients and a natural source of fibre while providing a boost of **high-quality protein** to support your **active lifestyle**. Whether you crave a fruity pick-me-up or a **guilt-free dessert**, these bites are designed to nourish your body and delight your senses. Just pick your favourite and enjoy a little taste of nature anytime.

**REAL FRUIT** | **gluten FREE** | **NO added sugars** | **palm-oil FREE** | **soy FREE**



#### LYOPHILIZED FRUIT

Pure strawberries, raspberries, and bananas for authentic flavour.



#### MILK PROTEIN COATING (MPC)

Delivers protein for muscle recovery and lasting energy.



#### MALTITOL

Natural sweetness without sugar for balanced indulgence.

Healthy lifestyle  
*Gam's*  
PROTEIN



## BANANA



### NUTRITIONAL VALUES PER 100 g

Energy:	1 903 kJ/455 kcal
Fat:	28 g
of which saturates:	26 g
Carbohydrate:	49 g
of which sugars:	17 g
of which polyols:	25 g
Fibre:	4,8 g
Protein:	9,7 g
Salt:	0,08 g

#### Ingredients:

Dark coating with maltitol and protein 74% [sweetener (maltitols), completely hydrogenated rapeseed and coconut oil, cocoa powder, **milk** protein concentrate, emulsifier (lecithins), flavouring]. Lyophilized bananas 25%. Glazing agent 1% (carnauba wax, beeswax, shellac). May contain **peanuts, soya** and **nuts**.

EAN/pcs: 8585067201239

## STRAWBERRY



### NUTRITIONAL VALUES PER 100 g

Energy:	1 934 kJ/462 kcal
Fat:	28 g
of which saturates:	25 g
Carbohydrate:	52 g
of which sugars:	18 g
of which polyols:	27 g
Fibre:	2,6 g
Protein:	11 g
Salt:	0,40 g

#### Ingredients:

White coating with maltitol and protein 79% [sweetener (maltitols), completely hydrogenated rapeseed and coconut oil, sweet **whey**, skimmed **milk** powder, **milk** protein concentrate, emulsifier (lecithins), flavouring]. Lyophilized strawberries 20%. Glazing agent 1% (carnauba wax, beeswax, shellac). May contain **peanuts, soya** and **nuts**.

EAN/pcs: 8585067201246

## RASPBERRY



### NUTRITIONAL VALUES PER 100 g

Energy:	1 941 kJ/464 kcal
Fat:	31 g
of which saturates:	29 g
Carbohydrate:	48 g
of which sugars:	7,7 g
of which polyols:	35 g
Fibre:	3,6 g
Protein:	11 g
Salt:	0,08 g

#### Ingredients:

Milk coating with maltitol and protein 82,3% [sweetener (maltitols), completely hydrogenated rapeseed and coconut oil, **milk** protein concentrate, skimmed **milk** powder, cocoa powder, emulsifier (lecithins), flavouring]. Lyophilized raspberries 16,7%. Glazing agent 1% (carnauba wax, beeswax, shellac). May contain **peanuts, soya** and **nuts**.

EAN/pcs: 8585067201222

Weight	Shelf life	Pcs. in box
70 g	365	10

# GAM'S PROTEIN NUTS

Our **Gam's Protein Nuts** are a perfect fusion of **crunch and creaminess**, offering premium whole nuts wrapped in a **smooth, high-protein coating**. Each bite combines the **rich, natural flavour** of **roasted almonds, hazelnuts, or peanuts** with a silky texture that turns everyday snacking into a moment of indulgence.

With **no added sugar** and a source of **essential nutrients**, these wholesome treats deliver both flavour and functionality. Packed with high-quality milk protein, they support muscle recovery and sustained energy — making them an ideal choice for a **nutritious snack**, a **post-workout boost**, or a **guilt-free dessert**. Just pick your favourite nut and enjoy the perfect blend of taste and nutrition, anytime and anywhere.

**PREMIUM WHOLE NUTS | gluten FREE | NO added sugars | palm-oil FREE | soy FREE**



**ALMONDS, HAZELNUTS & PEANUTS**

Naturally rich in healthy fats, fibre, and essential minerals.



**MILK PROTEIN COATING (MPC)**

Delivers high-quality protein for muscle support and long-lasting energy.



**MALTITOL**

Provides gentle sweetness without added sugar for balanced indulgence.

Healthy lifestyle  
*Gam's*  
**PROTEIN**



## ALMONDS



### NUTRITIONAL VALUES PER 100 g

Energy:..... 2 242 kJ/536 kcal  
 Fat:..... 43 g  
 of which saturates:..... 19 g  
 Carbohydrate:..... 25 g  
 of which sugars:..... 3,1 g  
 of which polyols:..... 17 g  
 Fibre:..... 8,3 g  
 Protein:..... 16 g  
 Salt:..... 0,05 g

#### Ingredients:

Unblanched **almonds** 49,5%.  
 Dark coating with maltitol and protein 49,5%  
 [sweetener (maltitols), completely hydrogenated rapeseed and coconut oil, cocoa powder, **milk** protein concentrate 10%, emulsifier (lecithins), flavouring]. Glazing agent 1% (carnauba wax, beeswax, shellac). May contain **peanuts, soya** and other **nuts**.

EAN/pcs: 8585067203486

## HAZELNUTS



### NUTRITIONAL VALUES PER 100 g

Energy:..... 2 411 kJ/576 kcal  
 Fat:..... 51 g  
 of which saturates:..... 20 g  
 Carbohydrate:..... 24 g  
 of which sugars:..... 2,7 g  
 of which polyols:..... 21 g  
 Fibre:..... 6,4 g  
 Protein:..... 13 g  
 Salt:..... 0,15 g

#### Ingredients:

Roasted blanched **hazelnut** kernels 49,5%.  
 Milk coating with maltitol and protein 49,5%  
 [sweetener (maltitols), completely hydrogenated rapeseed and coconut oil, **milk** protein concentrate 10%, skimmed **milk** powder, cocoa powder, emulsifier (lecithins), flavouring]. Glazing agent 1% (carnauba wax, beeswax, shellac). May contain **peanuts, soya** and other **nuts**.

EAN/pcs: 8585067203509

## PEANUTS



### NUTRITIONAL VALUES PER 100 g

Energy:..... 2 221 kJ/531 kcal  
 Fat:..... 44 g  
 of which saturates:..... 20 g  
 Carbohydrate:..... 23 g  
 of which sugars:..... 3,4 g  
 of which polyols:..... 21 g  
 Fibre:..... 5,3 g  
 Protein:..... 19 g  
 Salt:..... 0,05 g

#### Ingredients:

Roasted shelled **peanuts** 49,5%.  
 Milk coating with maltitol and protein 49,5%  
 [sweetener (maltitols), completely hydrogenated rapeseed and coconut oil, **milk** protein concentrate 10%, skimmed **milk** powder, cocoa powder, emulsifier (lecithins), flavouring]. Glazing agent 1% (carnauba wax, beeswax, shellac). May contain **soya** and **nuts**.

EAN/pcs: 8585067203493

Weight	Shelf life	Pcs. in box
80 g	365	12

# GAM'S PROTEIN LENTIL CHIPS

Our **Gam's Protein Lentil Chips** are a true celebration of taste, combining the **satisfying crunch** you love with the nutrition your body deserves. Made with **red lentils** as their key ingredient, these chips are a smart, wholesome alternative to traditional snacks — delivering up to **16% protein** and 50% less fat than regular potato chips.

Each bite blends a light, crisp texture with irresistible flavours like **Sea Salt, Smoked Ham, Sour Cream & Onion, Barbecue,** and **Lime & Chilli**. Whether you're fueling an active lifestyle or simply craving something savoury, these chips let you **indulge guilt-free** while supporting your wellbeing. Just pick your favourite and enjoy the perfect balance of flavour and nutrition.

**50% LESS FAT | SOURCE OF FIBRE | SOURCE OF PROTEIN | palm-oil FREE | soy FREE**



### RED LENTILS

Plant-based protein and fibre for energy and fullness.



### CORN AND RICE FLOUR

Light, gluten-free crunch in every bite.



### FLAVOUR SELECTION

5 delicious options to satisfy every savoury craving.

Healthy lifestyle  
*Gam's*  
**PROTEIN**



## SEA SALT



### NUTRITIONAL VALUES PER 100 g

Energy:.....1 886 kJ/449 kcal  
 Fat:.....16 g  
 of which saturates:.....1,8 g  
 Carbohydrate:.....59 g  
 of which sugars:.....2,1 g  
 Fibre:.....3,1 g  
 Protein:.....15 g  
 Salt:.....2,7 g

#### Ingredients:

Finely ground lentils 46%, corn flour, rice flour, sunflower oil 15%, seasoning ingredient with sea salt 7% (maltodextrin, sea salt 20,5%, unrefined cane sugar, yeast extract, sunflower oil), potato starch, salt, sugar. May contain **cereals** containing **gluten**, **milk** and **soya**.

EAN/pcs: 8585067201291

## SOUR CREAM & ONION



### NUTRITIONAL VALUES PER 100 g

Energy:.....1 876 kJ/447 kcal  
 Fat:.....16 g  
 of which saturates:.....1,9 g  
 Carbohydrate:.....58 g  
 of which sugars:.....4,2 g  
 Fibre:.....3,1 g  
 Protein:.....16 g  
 Salt:.....3,3 g

#### Ingredients:

Finely ground lentils 46%, corn flour, rice flour, sunflower oil 15%, seasoning ingredient with the flavour of sour cream and onion 7% [**whey** powder, salt, sugar, **milk** powder, yeast extract, onion, **cheese** powder, mixed spices (garlic, parsley), acidity regulator (lactic acid), flavouring], potato starch, salt, sugar. May contain **cereals** containing **gluten** and **soya**.

EAN/pcs: 8585067201307

## SMOKED HAM



### NUTRITIONAL VALUES PER 100 g

Energy:.....1 886 kJ/449 kcal  
 Fat:.....17 g  
 of which saturates:.....1,8 g  
 Carbohydrate:.....57 g  
 of which sugars:.....1,6 g  
 Fibre:.....3,4 g  
 Protein:.....15 g  
 Salt:.....2,80 g

#### Ingredients:

Finely ground lentils 46%, corn flour, rice flour, sunflower oil 15%, seasoning ingredient with the flavour of smoked ham 7% [dried glucose syrup, salt, flavour enhancer (disodium 5'-ribonucleotides), smoke flavouring, colour (paprika extract), antioxidant (extracts of rosemary)], potato starch, salt, sugar. May contain **cereals** containing **gluten**, **milk** and **soya**.

EAN/pcs: 8585067201314

## BARBECUE



### NUTRITIONAL VALUES PER 100 g

Energy:.....1 849 kJ/441 kcal  
 Fat:.....20 g  
 of which saturates:.....0,2 g  
 Carbohydrate:.....52 g  
 of which sugars:.....3,9 g  
 Fibre:.....3,0 g  
 Protein:.....12 g  
 Salt:.....4,01 g

#### Ingredients:

Finely ground lentils 44%, sunflower oil 19%, corn flour, rice flour, seasoning ingredient with the flavour of barbecue 8% (maltodextrin, salt, dextrose, yeast extract, onion, flavour, spice extract), potato starch, salt, sugar. May contain **cereals** containing **gluten**, **milk** and **soya**.

EAN/pcs: 8585067203264

Weight	Shelf life	Pcs. in box
65 g	362	12

**CHEESE & JALAPEÑO**



NUTRITIONAL VALUES PER 100 g

**COMING SOON**

EAN/pcs: 8585067203417

**LIME & CHILLI**



NUTRITIONAL VALUES PER 100 g

**COMING SOON**

EAN/pcs: 8585067203288

**SWEET CHILLI**



NUTRITIONAL VALUES PER 100 g

**COMING SOON**

EAN/pcs: 8585067203394

Weight	Shelf life	Pcs. in box
65 g	362	12

# GAM'S FREEZE-DRIED CHEESE

Our **Gam's Freeze-Dried Cheese** is a pure expression of tradition and innovation, transforming the **authentic cheese of the Tatra region** into a modern, functional snack. By using advanced freeze-drying technology, we preserve its rich flavour, high protein content, and natural goodness — creating a crunchy bite that is as nutritious as it is delicious.

With **100% cheese** as the only ingredient, these convenient snacks deliver the clean-label quality today's consumers expect. They are rich in protein, naturally satisfying, and perfectly suited to a healthy lifestyle — from everyday on-the-go snacking to active nutrition for athletes. Available in three unique varieties — **Natural Sticks**, **Natural Slices**, and **Beechwood Smoked Slices** — Gam's Lyophilized Cheese offers indulgence and functionality in every bite. Whether enjoyed as a standalone snack or paired with other foods, it combines traditional craftsmanship with modern nutritional needs.

**HIGH PROTEIN | FREEZE DRIED | 100% CHEESE | NATURAL PRODUCT | CHEESE BITES**



#### **100% TATRAS CHEESE**

Pure dairy protein, delivering authentic flavour and natural nutrition.



#### **FREEZE-DRIED TEXTURE**

Crunchy, lightweight and shelf-stable, while retaining original taste and nutrients.



#### **BEECHWOOD SMOKED OPTION**

Naturally smoked slices offering a unique and aromatic flavour twist.



**SLICES**



**NUTRITIONAL VALUES PER 100 ml**

Energy:..... 2051 kJ/492 kcal  
 Fat:..... 32 g  
 of which saturates:..... 21 g  
 Carbohydrate:..... 12 g  
 of which sugars:..... <0,50 g  
 Protein:..... 38 g  
 Salt:..... 5,5 g

**Ingredients:**

Pasteurized cow's **milk**, salt, rennet. Fat in dry matter min. 25%, dry matter min. 40%.

**EAN/pcs:** 8585067203516

**SMOKED SLICES**



**NUTRITIONAL VALUES PER 100 ml**

Energy:..... 2051 kJ/492 kcal  
 Fat:..... 32 g  
 of which saturates:..... 21 g  
 Carbohydrate:..... 12 g  
 of which sugars:..... <0,50 g  
 Protein:..... 38 g  
 Salt:..... 5,5 g

**Ingredients:**

Pasteurized cow's **milk**, salt, rennet. Fat in dry matter min. 25%, dry matter min. 40%. Smoked on beech wood.

**EAN/pcs:** 8585067203523

**STICKS**



**NUTRITIONAL VALUES PER 100 ml**

Energy:..... 2051 kJ/492 kcal  
 Fat:..... 32 g  
 of which saturates:..... 21 g  
 Carbohydrate:..... 12 g  
 of which sugars:..... <0,50 g  
 Protein:..... 38 g  
 Salt:..... 5,5 g

**Ingredients:**

Pasteurized cow's **milk**, salt, rennet. Fat in dry matter min. 25%, dry matter min. 40%.

**EAN/pcs:** 8585067203530

Weight	Shelf life	Pcs. in box
30	730	10

# GAM'S PROTEIN CHEESE CRUNCHY BALLS

Our **Gam's Protein Cheese Crunchy Balls** transform real cheese into an irresistibly crunchy, high-protein snack for health-conscious food lovers. Made from **100% Gouda or Cheddar cheese** and containing up to **48% protein**, these flavourful bites offer a natural, low-carb alternative to conventional savoury snacks — without compromising on taste.

Gently dried to preserve their authentic cheesy aroma and nutrients, they are **free from artificial additives, preservatives, and carbohydrates**, making them **KETO-friendly** and suitable for clean-label snacking. Rich in **calcium, phosphorus, and essential vitamins**, they deliver the same benefits as pure cheese, but in a light and crunchy format. Perfect on their own as a satisfying on-the-go snack, or paired with your favourite **wine, beer, or tea**, Gam's Protein Cheese Crunchy Balls are also a smart upgrade to **salads and soups**, bringing a flavourful twist and extra protein boost where ordinary croutons fall short.

**UP TO 48% PROTEIN | 100% CHEESE | NO ARTIFICIAL ADDITIVES | KETO FRIENDLY | NO CARBS | SOURCE OF CALCIUM & PHOSPHORUS**



#### 100% CHEESE

Made exclusively from Gouda or Cheddar, gently dried to preserve authentic flavour and nutrients.



#### HIGH PROTEIN CONTENT

Up to 48% natural protein to support strength, satiety, and a healthy lifestyle.



#### VERSATILE ENJOYMENT

Enjoy straight from the pack, pair with beverages, or use as a crunchy topping for salads and soups.



Healthy lifestyle  
*Gam's*  
PROTEIN

### CHEDDAR



#### NUTRITIONAL VALUES PER 100 ml

Energy:..... 2 531 kJ/605 kcal  
 Fat: ..... 47 g  
 of which saturates:..... 30 g  
 Carbohydrate:..... 1,5 g  
 of which sugars:..... 1,4 g  
 Protein:..... 42 g  
 Salt:..... 2,8 g

**Ingredients:**  
 Cheese (pasteurized cow's **milk**, salt, starter cultures, microbial rennet, carotene).

**EAN/pcs:** 8585067204056

### GOUDA



#### NUTRITIONAL VALUES PER 100 ml

Energy:..... 2 614kJ/688 kcal  
 Fat: ..... 44 g  
 of which saturates:..... 31 g  
 Carbohydrate:..... 1,5 g  
 of which sugars:..... 1,4 g  
 Protein:..... 48 g  
 Salt: ..... 3,1 g

**Ingredients:**  
 Cheese (pasteurized cow's **milk**, salt, starter cultures, microbial rennet).

**EAN/pcs:** 8585067204049

Weight	Shelf life	Pcs. in box
30	365	10

# GAM'S GINGER SHOTS

Our **Gam's Ginger Shots** are a true celebration of natural vitality, crafted with **100% pure ingredients** to energise your day and support your wellbeing. Each shot contains **35% cold-pressed ginger juice**, prized for its digestion-boosting and anti-inflammatory benefits, combined with the gentle sweetness of **bee honey** and the power of **vitamin C**.

Available in three vibrant flavours — Cranberry, Apple & Lemon, and Sea Buckthorn with Turmeric — these shots deliver an uplifting burst of freshness in every sip. Whether you need an invigorating start to your morning or a healthy pick-me-up any time of day, just open a bottle and feel the difference.

**35% GINGER juice | vitamin C | BEE HONEY | 100% NATURAL ingredients**



**COLD-PRESSED GINGER**  
Natural support for digestion, immunity, and daily vitality.



**BEE HONEY**  
Pure sweetness rich in nutrients and antioxidants.



**SUPERFRUIT SELECTION**  
Cranberry, lemon, sea buckthorn, and turmeric for extra wellness.

Healthy lifestyle  
*Gam's*  
PROTEIN



## CRANBERRIES



### NUTRITIONAL VALUES PER 100 ml

Energy:.....444 kJ/104 kcal  
 Fat:..... 0 g  
 of which saturates:..... 0 g  
 Carbohydrate:..... 26 g  
 of which sugars:..... 25 g  
 Protein:.....0,6 g  
 Salt:..... 0 g

**Ingredients:**

Cranberry juice 39,92%, cold-pressed ginger juice 35%, bees honey 25%, antioxidant (vitamin C) 0,08%

*For immediate consumption.*

*Store at room temperature.*

*Shake the bottle well before opening.*

*Any sediment is of natural origin.*

**EAN/pcs:** 8585067201673

## APPLE



### NUTRITIONAL VALUES PER 100 ml

Energy:.....315 kJ/74 kcal  
 Fat:..... 0 g  
 of which saturates:..... 0 g  
 Carbohydrate:..... 18 g  
 of which sugars:..... 18 g  
 Protein:.....1,1 g  
 Salt:..... 0 g

**Ingredients:**

Apple juice 35%, cold-pressed ginger juice 35%, bees honey 15%, lemon juice 14,92%, antioxidant (vitamin C) 0,08%.

*For immediate consumption.*

*Store at room temperature.*

*Shake the bottle well before opening.*

*Any sediment is of natural origin.*

**EAN/pcs:** 8585067201697

## TURMERIC SEA BUCKTHORN



### NUTRITIONAL VALUES PER 100 ml

Energy:.....332 kJ/78 kcal  
 Fat:.....1,0 g  
 of which saturates:..... 0 g  
 Carbohydrate:..... 19 g  
 of which sugars:..... 18 g  
 Protein:.....1,4 g  
 Salt:..... 0 g

**Ingredients:**

Cold pressed ginger juice 35%, sea buckthorn juice 25%, bees honey 20%, lemon juice 12,92%, turmeric juice 7%, antioxidant (vitamin C) 0,08%.

*For immediate consumption.*

*Store at room temperature.*

*Shake the bottle well before opening.*

*Any sediment is of natural origin.*

**EAN/pcs:** 8585067201680

Weight	Shelf life	Pcs. in box
60 ml	365	24

# GAM'S LYOPHILIZED FRUITS

Our **Gam's Lyophilized Fruit** captures the pure essence of nature — **sweet, tasty, and naturally nutritious**. Using gentle freeze-drying, we lock in the **authentic flavour, vibrant colour, and valuable nutrients** of fresh fruit, creating a delicious snack that's as close to nature as it gets.

Available in four irresistible varieties — **Banana, Pineapple, Raspberry, and Strawberry halves** — these light, crispy bites are perfect for enjoying on their own, adding to breakfast bowls, or mixing into your favourite recipes. **100% pure fruit, with no added sugar, no GMO, and nothing artificial** — just wholesome goodness prepared with care.

**PURE FRUIT | RAW FOOD | GMO FREE | NO added sugars | sweet & tasty | naturally nutritious**



**BANANA, PINEAPPLE, RASPBERRY & STRAWBERRY HALVES**  
Naturally rich in vitamins, minerals, fibre, and antioxidants.



**FREEZE-DRIED WITH CARE**  
Preserves natural flavour, colour, and nutrients for a fresh taste experience anytime.



**NO ADDITIVES**  
Only the best fruit, simply prepared, for guilt-free enjoyment.

Healthy lifestyle  
*Gam's*  
PROTEIN



## BANANA



### NUTRITIONAL VALUES PER 100 g

Energy:.....1 449 kJ/346 kcal  
 Fat:.....0,7 g  
 of which saturates:.....0,2 g  
 Carbohydrate:.....74 g  
 of which sugars:.....63 g  
 Fibre:.....6,8 g  
 Protein:.....4,3 g  
 Salt:.....0,01 g

**Ingredients:**

Lyophilized bananas 100%.

**EAN/pcs:** 8585067202878

## PINEAPPLE



### NUTRITIONAL VALUES PER 100 g

Energy:.....1 500 kJ/358 kcal  
 Fat:.....0,96 g  
 of which saturates:.....0,11 g  
 Carbohydrate:.....80 g  
 of which sugars:.....80 g  
 Fibre:.....6,4 g  
 Protein:.....2,95 g  
 Salt:.....0,025 g

**Ingredients:**

Lyophilized pineapple 100%.

**EAN/pcs:** 8585067202885

## RASPBERRY



### NUTRITIONAL VALUES PER 100 g

Energy:.....1 332 kJ/318 kcal  
 Fat:.....3,95 g  
 of which saturates:.....0,35 g  
 Carbohydrate:.....49 g  
 of which sugars:.....40 g  
 Fibre:.....28 g  
 Protein:.....8,0 g  
 Salt:.....0,01 g

**Ingredients:**

Lyophilized raspberries 100%.

**EAN/pcs:** 8585067202892

## STRAWBERRY



### NUTRITIONAL VALUES PER 100 g

Energy:.....1 608 kJ/383 kcal  
 Fat:.....0,4 g  
 of which saturates:.....0,35 g  
 Carbohydrate:.....89 g  
 of which sugars:.....64 g  
 Fibre:.....15 g  
 Protein:.....4,43 g  
 Salt:.....0,01 g

**Ingredients:**

Lyophilized strawberries halves 100%.

**EAN/pcs:** 8585067202861

Weight	Shelf life	Pcs. in box	Weight	Shelf life	Pcs. in box	Weight	Shelf life	Pcs. in box	Weight	Shelf life	Pcs. in box
30 g	365	8	25 g	365	8	15 g	365	8	15 g	365	8

# GAM'S FRUIT JAM

Our Gam's Fruit Jam brings the true taste of fruit to the forefront — clean, honest, and crafted for modern consumers who seek purity without compromise. Each jar is made with **85% real pure fruit**, gently cooked to preserve its vibrant flavour and natural aroma. Instead of traditional sugar, we use **birch sweetness** (xylitol), which provides a smooth, pleasant natural sweetness while keeping the product light and balanced. A touch of **lemon juice** completes the recipe, enhancing freshness and stability.

With **no refined sugar, no artificial additives, and no compromises**, this jam is perfectly suited for premium retail, health-focused customers, and innovative foodservice concepts. A clean-label, better-for-you option that fits today's demands. It's simply a **better fruit jam**.

**PURE FRUIT | CLEAN LABEL | NO ADDED SUGAR | SWEETENED WITH BIRCH | 85% FRUIT CONTENT | LEMON JUICE**



**85% FRUIT CONTENT**  
A rich, full-bodied jam made from real fruit — authentic taste and natural texture in every spoon.



**NO TRADITIONAL SUGAR ADDED**  
Sweetened exclusively with birch sweetness (xylitol), offering a balanced flavour, without refined sugar.



**PURE LEMON ZEST FOR BALANCE**  
Lemon juice fine-tunes acidity, improves fruit aroma, and guarantees a clean, refreshing finish.

Healthy lifestyle  
*Gam's*  
**PROTEIN**



## APRICOT



## NUTRITIONAL VALUES PER 100 g

Energy:..... 309 kJ/74 kcal  
 Fat:..... 0,26 g  
 of which saturates:..... 0,00 g  
 Carbohydrate:..... 13 g  
 of which sugars:..... 7,2 g  
 Fibre:..... 1,3 g  
 Protein:..... 0,78 g  
 Salt:..... 0 g

**Ingredients:**

Apricot 85%, sweetener 13% (xylitol), lemon juice, gelling agent (pectins). The product is allergen-free.

EAN/pcs: 8585067204582

## RASPBERRY



## NUTRITIONAL VALUES PER 100 g

Energy:..... 407 kJ/97 kcal  
 Fat:..... 0,50 g  
 of which saturates:..... 0,00 g  
 Carbohydrate:..... 16 g  
 of which sugars:..... 4,7 g  
 Fibre:..... 4,1 g  
 Protein:..... 0,9 g  
 Salt:..... 0 g

**Ingredients:**

Raspberry 85%, sweetener 13% (xylitol), lemon juice, gelling agent (pectins). The product is allergen-free.

EAN/pcs: 8585067204575

## STRAWBERRY



## NUTRITIONAL VALUES PER 100 g

Energy:..... 267 kJ/63 kcal  
 Fat:..... 0,33 g  
 of which saturates:..... 0,02 g  
 Carbohydrate:..... 9,5 g  
 of which sugars:..... 3,9 g  
 Fibre:..... 1,6 g  
 Protein:..... 0,71 g  
 Salt:..... 0 g

**Ingredients:**

Strawberry 85%, sweetener 13% (xylitol), lemon juice, gelling agent (pectins). The product is allergen-free.

EAN/pcs: 8585067204568

Weight	Shelf life	Pcs. in box
190 g	365	8

# GAM'S PROTEIN BIO CRISPBREAD

Our **Gam's Protein Bio Crispbread** is a true celebration of plant-based innovation, redefining **high-protein snacking** with clean, organic ingredients. Each crispbread is crafted with a unique blend of **lentils, peas, chickpeas, rice,** and **pumpkin seeds,** creating a light, crunchy texture that satisfies your cravings while supporting a balanced lifestyle.

With up to **28% protein**, they deliver complete nourishment and natural fibre without compromise. Available in three delicious varieties — **Sea Salt, Veggie with Herbs,** and **Pumpkin Seeds with Coriander** — this is the ultimate snack for those who demand more from every bite. Just pick your favourite and enjoy a new generation of functional nutrition.

**up to 28% PROTEIN | VEGAN | BIO | SOURCE of fibre | allergen FREE | gluten FREE**



#### ORGANIC LEGUME BLEND

Lentils, peas, chickpeas for plant-based protein and fibre.



#### GRAIN & SEED BASE

Rice and pumpkin seeds for extra crunch and nutrients.



#### FLAVOUR SELECTION

3 varieties inspired by pure, natural ingredients.

Healthy lifestyle  
*Gam's*  
PROTEIN



## SEA SALT



### NUTRITIONAL VALUES PER 100 g

Energy:.....1 527 kJ/361 kcal  
 Fat:.....1,8 g  
 of which saturates:.....0,3 g  
 Carbohydrate:.....59 g  
 of which sugars:.....2,3 g  
 Fibre:.....6,6 g  
 Protein:.....24 g  
 Salt:.....0,90 g

**Ingredients:**

Lentil flour (red, green, brown lentils)\* 48 %, pea flour (yellow pea)\* 44 %, pea starch\*, chickpea flour\*, sea salt 0,9%.

\*product from organic farming

EAN/pcs: 8585067201970

Weight	Shelf life	Pcs. in box
50 g	548	28

## PUMPKIN SEEDS WITH CORIANDER



### NUTRITIONAL VALUES PER 100 g

Energy:.....1 615 kJ/381 kcal  
 Fat:.....3,6 g  
 of which saturates:.....0,7 g  
 Carbohydrate:.....67 g  
 of which sugars:.....0,9 g  
 Fibre:.....3,1 g  
 Protein:.....19 g  
 Salt:.....1,0 g

**Ingredients:**

Rice white flour\*, pumpkin seeds flour 20%\*, sea salt, garlic granulated\*, dried coriander 0,4%\*.

\*product from organic farming

EAN/pcs: 8585067201956

Weight	Shelf life	Pcs. in box
50 g	548	32

## VEGGIE WITH HERBS



### NUTRITIONAL VALUES PER 100 g

Energy:.....1 481 kJ/350 kcal  
 Fat:.....1,9 g  
 of which saturates:.....0,4 g  
 Carbohydrate:.....50 g  
 of which sugars:.....2,4 g  
 Fibre:.....10 g  
 Protein:.....28 g  
 Salt:.....1,50 g

**Ingredients:**

Lentil flour\* (red, green, brown lentil) 55%, pea flour\* (green pea), rice flour\*, pea protein isolate\* 10%, dry onion\*, dry parsley\*, mixture vegetables\* 1% (salt, carrot\*, potato flakes\*, onion\*, parsnip\*, lovage\*, parsley\*, chive\* 2%), sea salt.

\*product from organic farming

EAN/pcs: 8585067201994

Weight	Shelf life	Pcs. in box
50 g	548	32

# GAM'S PROTEIN PASTA

Our **Gam's Protein Pasta** is a true celebration of smart nutrition, redefining traditional pasta with a **high-protein, high-fibre**, and **low-glycemic profile** that perfectly fits a modern, health-focused lifestyle. Crafted with a unique blend of **lupine flour, durum wheat**, and **oat beta-glucans**, it delivers **24% protein**, supports stable energy, and helps you stay satisfied for longer.

Compared to regular pasta, it offers **+45% more protein, +146% more fibre**, and **32% fewer carbs**, making it an ideal choice for athletes, diabetics, and anyone who refuses to compromise on taste or wellbeing. From **warm dishes** to **fresh salads**, every serving combines authentic texture with next-level nutrition. Just cook, enjoy, and feel the difference.

**24% PROTEIN | LOW glycemic index | more FIBRE | FEWER carbs**



## LUPINE FLOUR

Plant protein and fibre to help balance blood sugar.



## DURUM WHEAT

Traditional taste and texture for versatile meals.



## OAT BETA-GLUCANS

Support digestion and long-lasting satiety.

Healthy lifestyle  
*Gam's*  
PROTEIN



FUSILLI



**NUTRITIONAL VALUES PER 100 g (dry/cooked)**

Energy:..... 1 434 kJ/341 kcal, 626 kJ/149 kcal  
 Fat: .....3,4 g/2,8 g  
 of which saturates:..... 0,9 g/1,3 g  
 Carbohydrate:..... 49 g/20 g  
 of which sugars:..... 4,9 g/0,9 g  
 Fibre: .....18 g/5,7 g  
 Protein:.....20 g/7,8 g  
 Salt:.....0,05 g/0,02 g

**Ingredients:**

Durum **wheat** flour 67,5%, **lupin** flour 20%, **oat** fibre 7,5%, vital **wheat gluten** 5%. May contain **eggs**.

EAN/pcs: 8585067201925

FILINI



**NUTRITIONAL VALUES PER 100 g (dry/cooked)**

Energy:.....1434 kJ/341 kcal, 635 kJ/151 kcal  
 Fat: .....3,4 g/1,7 g  
 of which saturates:..... 0,9 g/0,5 g  
 Carbohydrate:.....49 g/22 g  
 of which sugars:..... 4,9 g/0,5 g  
 Fibre: .....18 g/6,6 g  
 Protein:.....20 g/8,8 g  
 Salt:.....0,05 g/0,04 g

**Ingredients:**

Durum **wheat** flour 67,5%, **lupin** flour 20%, **oat** fibre 7,5%, vital **wheat gluten** 5%. May contain **eggs**.

EAN/pcs: 8585067201932

PENNE



**NUTRITIONAL VALUES PER 100 g (dry/cooked)**

Energy:..... 1434 kJ/341 kcal, 626 kJ/149 kcal  
 Fat: .....3,4 g/2,8 g  
 of which saturates:..... 0,9 g/1,3 g  
 Carbohydrate:..... 49 g/20 g  
 of which sugars:..... 4,9 g/0,9 g  
 Fibre: .....18 g/5,7 g  
 Protein:.....20 g/7,8 g  
 Salt:.....0,05 g/0,02 g

**Ingredients:**

Durum **wheat** flour 67,5%, **lupin** flour 20%, **oat** fibre 7,5%, vital **wheat gluten** 5%. May contain **eggs**.

EAN/pcs: 8585067201918

SPAGHETTI



**NUTRITIONAL VALUES PER 100 g (dry/cooked)**

Energy:.....1434 kJ/341 kcal, 635 kJ/151 kcal  
 Fat: .....3,4 g/1,7 g  
 of which saturates:..... 0,9 g/0,5 g  
 Carbohydrate:.....49 g/22 g  
 of which sugars:..... 4,9 g/0,9 g  
 Fibre: .....18 g/6,6 g  
 Protein:.....20 g/8,8 g  
 Salt: .....0,05 g/0,04 g

**Ingredients:**

Durum **wheat** flour 67,5%, **lupin** flour 20%, **oat** fibre 7,5%, vital **wheat gluten** 5%. May contain **eggs**.

EAN/pcs: 8585067201949

Weight	Shelf life	Pcs. in box
250 g	1095	10

Weight	Shelf life	Pcs. in box
250 g	1095	10

Weight	Shelf life	Pcs. in box
250 g	1095	10

Weight	Shelf life	Pcs. in box
250 g	1095	24

# GAM'S DIETARY SUPPLEMENTS CAPSULES

Our **Gam's Dietary Supplements** are a true celebration of science-backed innovation, offering a wide range of **premium nutritional solutions** to help you feel your best every day. Crafted with carefully selected active ingredients, each product is designed to support your health goals without compromise. From **Vitamins & Immunity** and **Antioxidants & Detox**, to **Fat Burners**, **Stress & Balance**, **Digestion**, and **Beauty**, our supplements deliver functional benefits you can rely on. Whether you're looking to boost energy, manage weight, improve digestion, or enhance your skin, hair, and nails, just choose your area of focus and discover results you can feel.

**PURE ingredients | science-based formulations | no unnecessary additives**



#### MULTIVITAMINS & BOTANICALS

Essential vitamins, ginger, grape seed extract, and adaptogens to nourish your body and mind.



#### HYALURONIC ACID

Helps maintain skin hydration, supports healthy joints, and promotes a youthful, radiant appearance from within.



#### PLANT EXTRACTS & FUNCTIONAL COMPOUNDS

Garcinia, CLA, L-carnitine, and white kidney bean for effective weight management and metabolism.



Healthy lifestyle,  
*Gam's*  
PROTEIN

## ANTIOXIDANT & DETOX CAPS



### ACTIVE INGREDIENTS DAILY DOSE - 1 CAPSULE

Vitamin C:	160 mg
Japanese Knotweed Root Extract:	120 mg
from which Resveratrol:	60 mg
Turmeric Extract 30:1:	100 mg
from which Curcuminoids:	95 mg
Sophora Japonica Extract 20:1:	100 mg
from which Quercetin:	95 mg
Grape Seed Extract:	80 mg
from which Proanthocyanidins:	76 mg
Vitamin E:	24 mg
Marigold Extract 10:1:	18,75 mg
from which Lutein:	15 mg
Zinc:	10 mg
Selenium:	100 mcg

#### Ingredients:

Vitamin C (Ascorbic Acid), vegan capsule shell, Japanese Knotweed Root Extract, Turmeric Extract 30:1, Sophora Japonica extract 20:1, Grape Seed Extract, Zinc Bisglycinate, bulking agent: Microcrystalline Cellulose, Vitamin E (DL-alpha-tocopheryl acetate), Selenium Methionine, anti-caking agent: Magnesium Stearate, Marigold Extract 10:1. The product is allergen-free.

**Direction for use:** Take one capsule daily with a glass of water. **Warnings:** This product is not a substitute for balanced, varied diet. Store in cool, dry place.

Not for use by children, pregnant and breastfeeding women. Keep out of reach of children. Do not exceed the recommended daily dose.

EAN/pcs: 8585067201550

Weight	Shelf life	Pcs. in box
80,26 g	730	24

## HYALURONIC ACID



### ACTIVE INGREDIENTS DAILY DOSE - 1 CAPSULE

Hyaluronic Acid:	100 mg
------------------	--------

#### Ingredients:

bulking agent: Microcrystalline Cellulose, gelatine capsule shell, Sodium hyaluronate, anti-caking agent: Magnesium Stearate.

**Direction for use:** Take one capsule daily with a glass of water.

**Warnings:** This product is not a substitute for balanced, varied diet. Store in cool, dry place. Not for use by children, pregnant and breastfeeding women. Keep out of reach of children. Do not exceed the recommended daily dose.

EAN/pcs: 8585067201581

Weight	Shelf life	Pcs. in box
58,32 g	730	24

## SLEEP & LOSE WEIGHT



### ACTIVE INGREDIENTS DAILY DOSE - 1 CAPSULE

Acetyl L - Carnitine:	300 mg
Conjugated Linoleic Acid:	200 mg
Raspberry Ketones Natural 25:1:	50 mg
from which Ketones:	2 mg
L - Tryptophan Powder:	50 mg
BioPerine® - Black Pepper	
Extract 50:1:	4 mg
from which Piperine:	3,8 mg

#### Ingredients:

Acetyl L - Carnitine, Conjugated Linoleic Acid, vegan capsule shell, Raspberry Ketones Natural 25:1, L - Tryptophan, Silicon Dioxide Sipernat, anti-caking agent: Magnesium Stearate, bulking agent: Microcrystalline Cellulose, BioPerine® - Black Pepper Extract 50:1.

**Direction for use:** Take one capsule daily with a glass of water.

**Warnings:** This product is not a substitute for balanced, varied diet. Store in cool, dry place. Not for use by children, pregnant and breastfeeding women. Keep out of reach of children. Do not exceed the recommended daily dose.

EAN/pcs: 8585067201604

Weight	Shelf life	Pcs. in box
71,73 g	730	24

## IMMUNITY



### ACTIVE INGREDIENTS DAILY DOSE - 1 CAPSULE

Vitamin C:	240 mg
Vitamin B3:	16 mg
Vitamin E:	12 mg
Vitamin B5:	6 mg
Vitamin B2:	1,4 mg
Vitamin B6:	1,4 mg
Vitamin B1:	1,1 mg
Vitamin B9:	200 mcg
Vitamin B7:	50 mcg
Vitamin D3:	12,5 mcg
Vitamin B12:	2,5 mcg

#### Ingredients:

Organic Ginger Powder, Multivitamin Premix Quali® Blend (Vitamin B1, Vitamin B2, Vitamin B3, Vitamin B5, Vitamin B6, Vitamin B7, Vitamin B9, Vitamin B12, Vitamin E), Vitamin C (Ascorbic Acid), bulking agent: Microcrystalline Cellulose, vegan capsule shell, anti-caking agent: Magnesium Stearate, Vitamin D3 (Cholecalciferol).

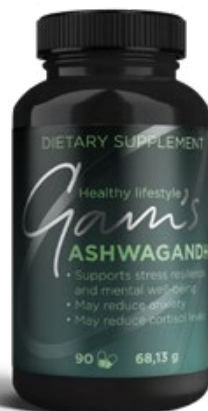
**Direction for use:** Take one capsule daily with a glass of water.

**Warnings:** This product is not a substitute for balanced, varied diet. Store in cool, dry place. Not for use by children, pregnant and breastfeeding women. Keep out of reach of children. Do not exceed the recommended daily dose.

EAN/pcs: 8585067201598

Weight	Shelf life	Pcs. in box
81 g	730	24

## ASHWAGANDHA



### ACTIVE INGREDIENTS DAILY DOSE - 1 CAPSULE

Ashwagandha 25:1:	500 mg
from which Withanolides:	25 mg

#### Ingredients:

Ashwagandha 25:1, vegan capsule shell, bulking agent:

Microcrystalline Cellulose, anti-caking agent: Magnesium Stearate.

**Direction for use:** Take one capsule daily with a glass of water.

**Warnings:** This product is not a substitute for balanced, varied diet. Store in cool, dry place. Not for use by children, pregnant and breastfeeding women. Keep out of reach of children. Do not exceed the recommended daily dose.

EAN/pcs: 8585067201567

Weight	Shelf life	Pcs. in box
68,13 g	730	24

## HUNGER CONTROL



### ACTIVE INGREDIENTS DAILY DOSE - 1 CAPSULE

Garcinia Cambogia Extract 12:1:	300 mg
from which Hydroxycitric Acid:	180 mg
White Kidney Bean Extract 20:1:	200 mg
Apple Cider Vinegar Extract (5% Acidity):	50 mg
Chromium:	559 mcg

#### Ingredients:

Garcinia Cambogia Extract 12:1, White Kidney Bean Extract 20:1, vegan capsule shell, bulking agent: Microcrystalline Cellulose, Apple Cider Vinegar Extract, anti-caking agent: Magnesium Stearate, Chromium Picolinate.

**Direction for use:** Take one capsule daily with a glass of water.

**Warnings:** This product is not a substitute for balanced, varied diet. Store in cool, dry place. Not for use by children, pregnant and breastfeeding women. Keep out of reach of children. Do not exceed the recommended daily dose.

EAN/pcs: 8585067201574

Weight	Shelf life	Pcs. in box
69,405 g	730	24

# GAM'S DIETARY SUPPLEMENTS

## MULTICOLLAGEN

Our **Gam's Premium Multi Collagen** is a true celebration of advanced nutrition, combining **four unique collagen sources** to deliver exceptional support for your skin, joints, and overall vitality. This highly concentrated formula provides **at least 8,690 mg of bioactive collagen per dose**, offering five types of collagen peptides (I, II, III, V, X) to help you look and feel your best. Enriched with **19 essential amino acids**, including glycine, proline, and hydroxyproline, it promotes elasticity, supports regeneration, and helps maintain a youthful appearance. Available in **Lemon, Green Apple, Strawberry**, and a **Mix Flavour Package**, this premium blend is designed to fit seamlessly into your daily routine. Just pick your favourite and experience the next generation of collagen supplementation.

**COLLAGEN I, II, III, V, X | 19 amino acids | Vitamin C | ZINC | with STEVIA**



### **BOVINE HYDROLYZED COLLAGEN PEPTAN® B**

Supports joint health and skin elasticity.



### **FISH HYDROLYZED COLLAGEN PEPTAN® F**

Fast absorption to nourish skin and connective tissues.



### **EGGSHELL MEMBRANE**

Promotes flexibility, regeneration, and youthful-looking skin.

Healthy lifestyle  
*Gam's*  
**PROTEIN**



## 3 FLAVOUR SELECTION



## STRAWBERRY



## LEMON



## GREEN APPLE



### INGREDIENT LIST FOR DAILY DOSE (10 g)

Bovine Hydrolyzed Collagen Peptan® B:  
 Strawberry flavour: ..... 8 610 mg  
 Green Apple flavour: ..... 7 908 mg  
 Lemon flavour: ..... 8 352 mg  
 Fish Hydrolyzed Collagen Peptan® F:.. 750 mg  
 Vitamin C (Ascorbic Acid):..... 80 mg  
 Zinc Bisglycinate: ..... 50 mg  
 as Zinc: ..... 10 mg  
 Sodium Hyaluronate: ..... 30 mg  
 as Hyaluronic Acid: ..... 29,13 mg  
 Bovine Hydrolyzed Cartilage: ..... 25 mg  
 Eggshell Membrane: ..... 7 mg

#### Ingredients:

Bovine Hydrolyzed Collagen Peptan® B, **Fish** Hydrolyzed Collagen Peptan® F, Acidity regulator (Citric Acid Anhydrous), Flavourings (Strawberry, Apple, Lemon), Vitamin C (Ascorbic Acid), Zinc Bisglycinate, Colouring [beetroot concentrate, (carthamus concentrate, spirulina extract), carotenes], Sweetener (steviol glycosides from Stevia), Sodium Hyaluronate, Bovine Hydrolyzed Cartilage, **Eggshell** Membrane. **Allergens: Fish, eggs.** \*A daily dose of 10,000 mg contains at least 8,690 mg of collagen. **Direction for use:** Mix daily dose of 10 g (one sachet) with 200 - 300 ml of water, stir and drink. Collagen mixes well in smoothies and other blended drinks. **Warnings:** This product is not a substitute for balanced, varied diet. Store in cool, dry place. Not for use by children, pregnant and breastfeeding women. Keep out of reach of children. The recommended daily dose should not be exceeded.

EAN/pcs: 8585067201512

### INGREDIENT LIST FOR DAILY DOSE (10 g)

Bovine Hydrolyzed Collagen Peptan® B: ..... 8 610 mg  
 Fish Hydrolyzed Collagen Peptan® F:.. 750 mg  
 Vitamin C (Ascorbic Acid):..... 80 mg  
 Zinc Bisglycinate: ..... 50 mg  
 as Zinc: ..... 10 mg  
 Sodium Hyaluronate: ..... 30 mg  
 as Hyaluronic Acid: ..... 29,13 mg  
 Bovine Hydrolyzed Cartilage: ..... 25 mg  
 Eggshell Membrane: ..... 7 mg

#### Ingredients:

Bovine Hydrolyzed Collagen Peptan® B, **Fish** Hydrolyzed Collagen Peptan® F, Acidity regulator (Citric Acid Anhydrous), Flavouring (strawberry), Vitamin C (Ascorbic Acid), Zinc Bisglycinate, Colouring (Beetroot), Sweetener (steviol glycosides from Stevia), Sodium Hyaluronate, Bovine Hydrolyzed Cartilage, **Eggshell** Membrane. **Allergens: Fish, eggs.** \*A daily dose of 10,000 mg contains 9,392 mg of collagen. **Direction for use:** Mix daily dose of 10 g (one sachet) with 200 - 300 ml of water, stir and drink. Collagen mixes well in smoothies and other blended drinks. **Warnings:** This product is not a substitute for balanced, varied diet. Store in cool, dry place. Not for use by children, pregnant and breastfeeding women. Keep out of reach of children. The recommended daily dose should not be exceeded.

EAN/pcs: 8585067201529

### INGREDIENT LIST FOR DAILY DOSE (10 g)

Bovine Hydrolyzed Collagen Peptan® B: ..... 8 352 mg  
 Fish Hydrolyzed Collagen Peptan® F:.. 750 mg  
 Vitamin C (Ascorbic Acid):..... 80 mg  
 Zinc Bisglycinate: ..... 50 mg  
 as Zinc: ..... 10 mg  
 Sodium Hyaluronate: ..... 30 mg  
 as Hyaluronic Acid: ..... 29,13 mg  
 Bovine Hydrolyzed Cartilage: ..... 25 mg  
 Eggshell Membrane: ..... 7 mg

#### Ingredients:

Bovine Hydrolyzed Collagen Peptan® B, **Fish** Hydrolyzed Collagen Peptan® F, Acidity regulator (Citric Acid Anhydrous), Flavouring (Lemon), Vitamin C (Ascorbic Acid), Zinc Bisglycinate, Sodium Hyaluronate, Colouring (Beta-carotene), Bovine Hydrolyzed Cartilage, Sweetener (steviol glycosides from Stevia), **Eggshell** Membrane. **Allergens: Fish, eggs.** \*A daily dose of 10,000 mg contains at least 9,134 mg of collagen. **Direction for use:** Mix daily dose of 10 g (one sachet) with 200 - 300 ml of water, stir and drink. Collagen mixes well in smoothies and other blended drinks. **Warnings:** This product is not a substitute for balanced, varied diet. Store in cool, dry place. Not for use by children, pregnant and breastfeeding women. Keep out of reach of children. The recommended daily dose should not be exceeded.

EAN/pcs: 8585067201543

### INGREDIENT LIST FOR DAILY DOSE (10 g)

Bovine Hydrolyzed Collagen Peptan® B: ..... 7 908 mg  
 Fish Hydrolyzed Collagen Peptan® F:.. 750 mg  
 Vitamin C (Ascorbic Acid):..... 80 mg  
 Zinc Bisglycinate: ..... 50 mg  
 as Zinc: ..... 10 mg  
 Sodium Hyaluronate: ..... 30 mg  
 as Hyaluronic Acid: ..... 29,13 mg  
 Bovine Hydrolyzed Cartilage: ..... 25 mg  
 Eggshell Membrane: ..... 7 mg

#### Ingredients:

Bovine Hydrolyzed Collagen Peptan® B, **Fish** Hydrolyzed Collagen Peptan® F, Acidity regulator (Citric Acid Anhydrous), Flavouring (Apple), Sweetener (steviol glycosides from Stevia), Vitamin C (Ascorbic Acid), Zinc Bisglycinate, Colouring (carthamus concentrate, spirulina extract), Sodium Hyaluronate, Bovine Hydrolyzed Cartilage, **Eggshell** Membrane. **Allergens: Fish, eggs.** \*A daily dose of 10,000 mg contains 8,690 mg of collagen. **Direction for use:** Mix daily dose of 10 g (one sachet) with 200 - 300 ml of water, stir and drink. Collagen mixes well in smoothies and other blended drinks. **Warnings:** This product is not a substitute for balanced, varied diet. Store in cool, dry place. Not for use by children, pregnant and breastfeeding women. Keep out of reach of children. The recommended daily dose should not be exceeded.

EAN/pcs: 8585067201536

Weight	Shelf life	Pcs. in box
300 g	730	6



# ANJ-DISTRIBUTION: YOUR PARTNER IN PRIVATE LABEL PRODUCTION

*All products in this catalog can be branded with your brand and label.*

## WHY PARTNER WITH US:

- Our **diverse product portfolio** and **unique recipes**, aligned with **market trends**, provide you with a **competitive edge**.
- We are also ready to develop **new segments** or **flavours tailored to your specific needs**.
- With a **full development team**, we offer **comprehensive** and **professional services** to our customers.
- We can produce **low-quantity batches, minimizing your financial risks by reducing large inventory requirements**.  
This is a significant advantage for introducing new products to specific markets or conducting market acceptance testing.
- As a **young and flexible production company**, we pride ourselves on our **quick service and fast delivery**.
- Available certifications: HACCP, IFS, and more. Please inquire for further details.

## BECOME OUR CLIENT



OUR CATALOGUE





[www.gams-shop.com](http://www.gams-shop.com)



A.N.J. distribution s.r.o.  
Diakovská 9 | 927 01 Šaľa | Slovakia  
[www.anj-distribution.com](http://www.anj-distribution.com)  
[sales@anj-distribution.com](mailto:sales@anj-distribution.com)



CONTACT US

